

— WE CREATE MOBILE WORKPLACES —



VOLKSWAGEN

Caddy, ID.Buzz, Transporter T6, Crafter & Amarok



SYSTEM 
EDSTRÖM

VW CADDY CARGO

For price information, mounting time and content in our van racking packages, scan the QR code on the first page.

On electric and hybrid vans we recommend mounting by an experienced installer. Batteries and cable harnesses for approximately 400 volt must be taken in consideration. Cost of a floor may be added.



Art.No	LxDxH	Kg
F42200	1149x300x890 mm	23



Art.No	LxDxH	Kg
F42201	848x300x890 mm	17



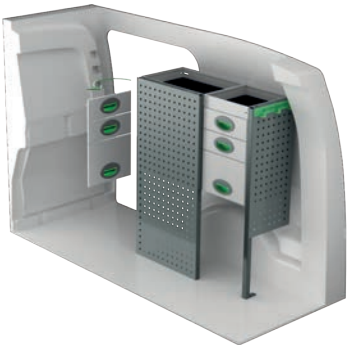
Art.No	LxDxH	Kg
F42202	1149x300x1000 mm	35



Art.No	LxDxH	Kg
F42203	804x300x1000 mm	32



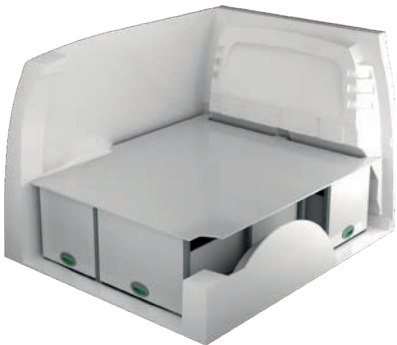
Art.No	LxDxH	Kg
F42204	1239x300x1075 mm	42



Art.No	LxDxH	Kg
F42205	804x300x1000 mm	40



Art.No	Height	Kg
F42214	250	84



Art.No	Height	Kg
F42217	470	89

VW CADDY CARGO MAXI

For price information, mounting time and content in our van racking packages, scan the QR code on the first page.

On electric and hybrid vans we recommend mounting by an experienced installer. Batteries and cable harnesses for approximately 400 volt must be taken in consideration. Cost of a floor may be added.



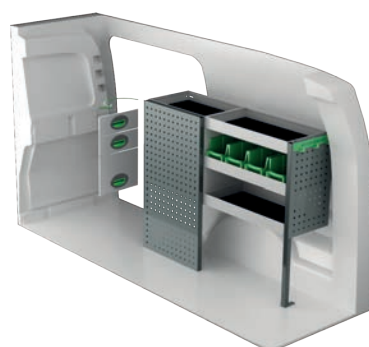
Art.No	LxDxH	Kg
F42220	1572x300x890 mm	28



Art.No	LxDxH	Kg
F42221	1061x300x890 mm	23



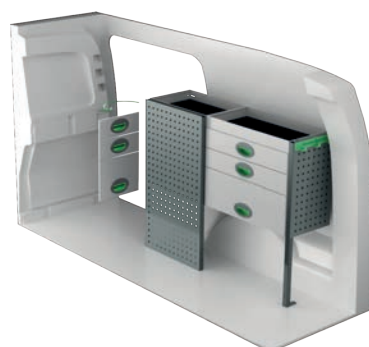
Art.No	LxDxH	Kg
F42222	1631x300x1000 mm	46



Art.No	LxDxH	Kg
F42223	1107x300x890 mm	35



Art.No	LxDxH	Kg
F42224	1631x300x1075 mm	56



Art.No	LxDxH	Kg
F42225	1107x300x890 mm	46



Art.No	Height	Kg
F42234	250	101

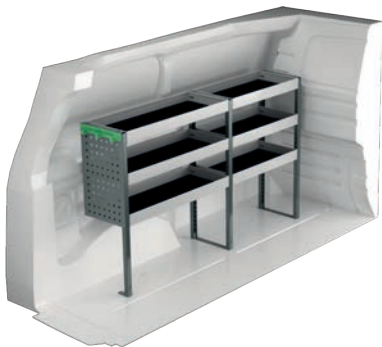


Art.No	Height	Kg
F42237	470	104

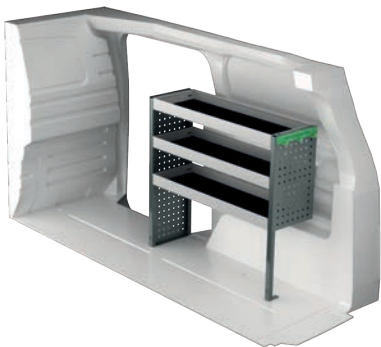
VW ID. BUZZ CARGO

For price information, mounting time and content in our van racking packages, scan the QR code on the first page.

On electric and hybrid vans we recommend mounting by an experienced installer. Batteries and cable harnesses for approximately 400 volt must be taken in consideration. Cost of a floor may be added.



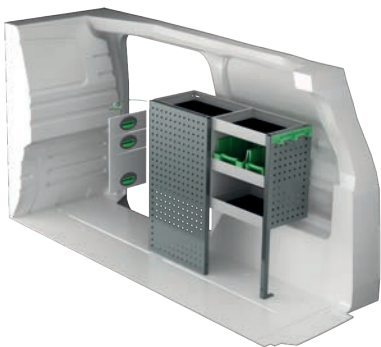
Art.No	LxDxH	Kg
F42250	1483x300x890 mm	23



Art.No	LxDxH	Kg
F42251	971x300x890 mm	19



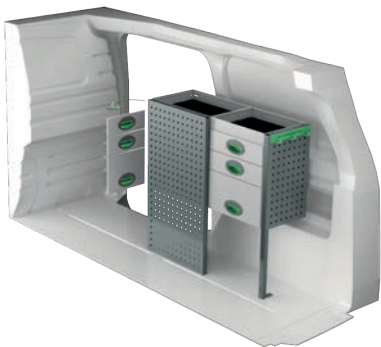
Art.No	LxDxH	Kg
F42252	1452x300x890 mm	38



Art.No	LxDxH	Kg
F42253	894x300x890 mm	32



Art.No	LxDxH	Kg
F42254	1483x300x890 mm	39



Art.No	LxDxH	Kg
F42255	894x300x890 mm	41



Art.No	Height	Kg
F42261	250	101

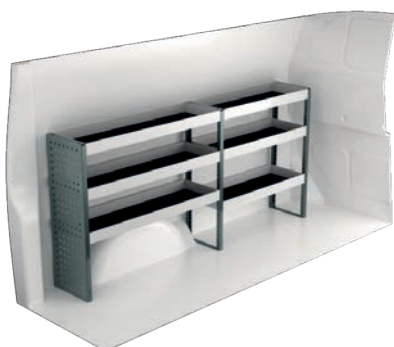


Art.No	Height	Kg
F42264	470	104

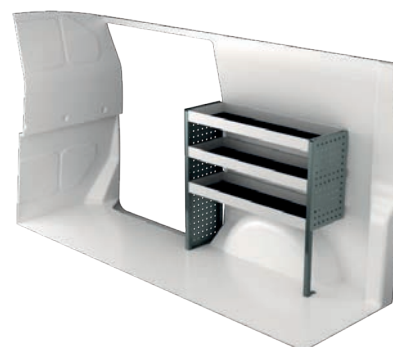
VW TRANSPORTER T6 L1

For price information, mounting time and content in our van racking packages, scan the QR code on the first page.

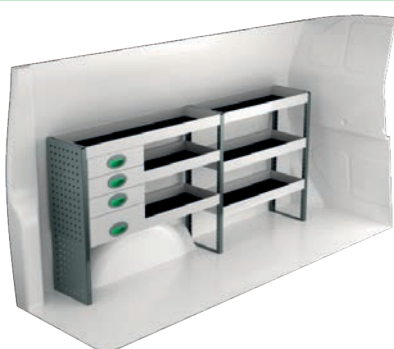
On electric and hybrid vans we recommend mounting by an experienced installer. Batteries and cable harnesses for approximately 400 volt must be taken in consideration. Cost of a floor may be added.



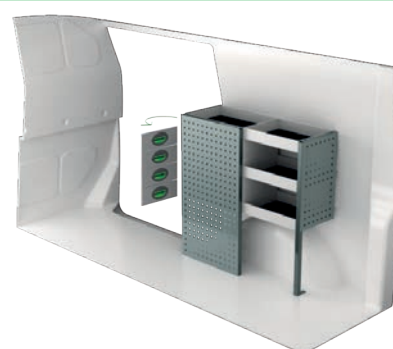
Art.No	LxDxH	Kg
F41640	1875x300x890 mm	29



Art.No	LxDxH	Kg
F41641	970x300x890 mm	19



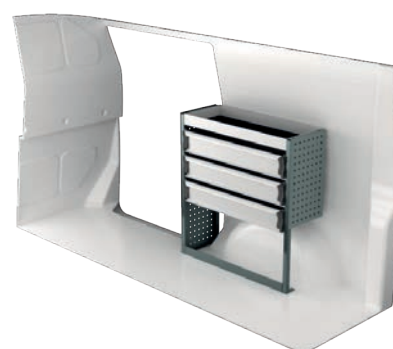
Art.No	LxDxH	Kg
F41642	1875x300x890 mm	41



Art.No	LxDxH	Kg
F41643	894x300x890 mm	34



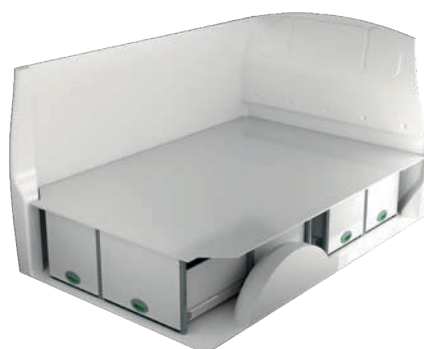
Art.No	LxDxH	Kg
F41644	1875x300x1185 mm	64



Art.No	LxDxH	Kg
F41645	848x300x890 mm	25



Art.No	Height	Kg
F41651	250	115

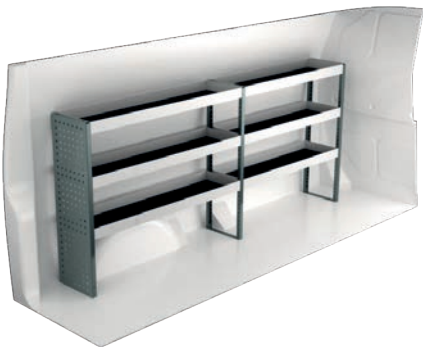


Art.No	Height	Kg
F41656	470	133

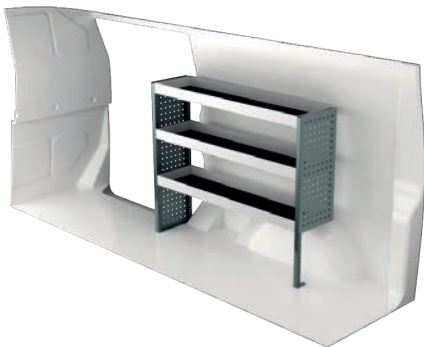
VW TRANSPORTER T6 L2

For price information, mounting time and content in our van racking packages, scan the QR code on the first page.

On electric and hybrid vans we recommend mounting by an experienced installer. Batteries and cable harnesses for approximately 400 volt must be taken in consideration. Cost of a floor may be added.



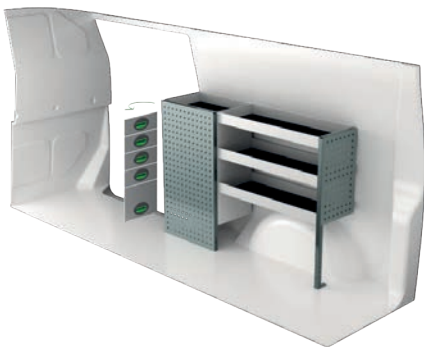
Art.No	LxDxH	Kg
F41660	2267x300x1000 mm	36



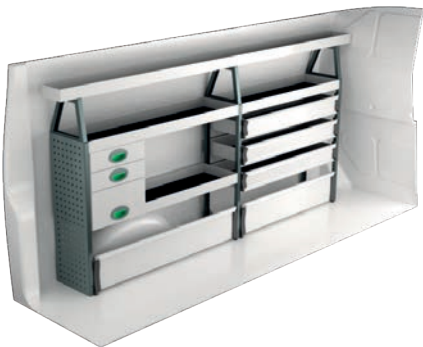
Art.No	LxDxH	Kg
F41661	1238x300x1000 mm	23



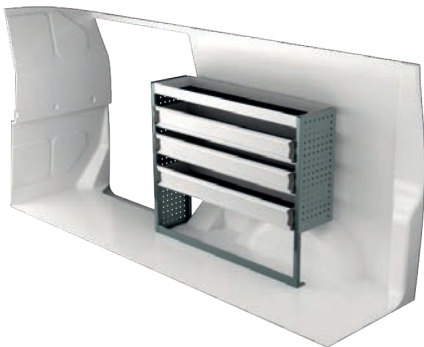
Art.No	LxDxH	Kg
F41662	2267x300x890 mm	44



Art.No	LxDxH	Kg
F41663	1286x300x890 mm	44



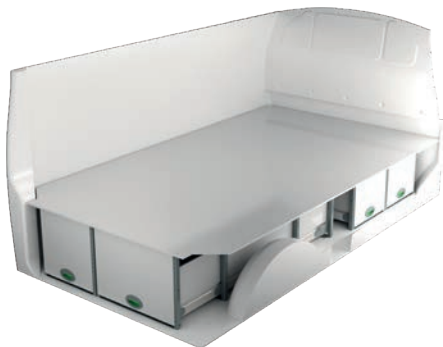
Art.No	LxDxH	Kg
F41664	2267x300x1185 mm	69



Art.No	LxDxH	Kg
F41665	1240x300x1000 mm	34



Art.No	Height	Kg
F41675	250	120

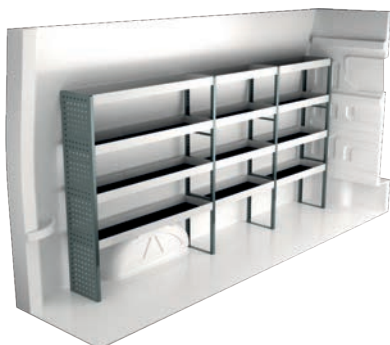


Art.No	Height	Kg
F41677	470	149

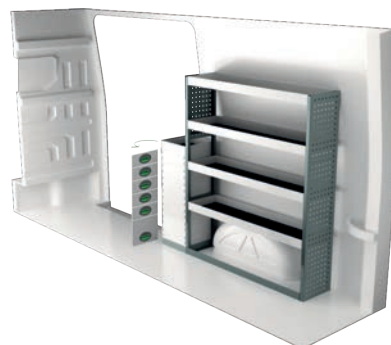
VW CRAFTER L3H3

For price information, mounting time and content in our van racking packages, scan the QR code on the first page.

On electric and hybrid vans we recommend mounting by an experienced installer. Batteries and cable harnesses for approximately 400 volt must be taken in consideration. Cost of a floor may be added.



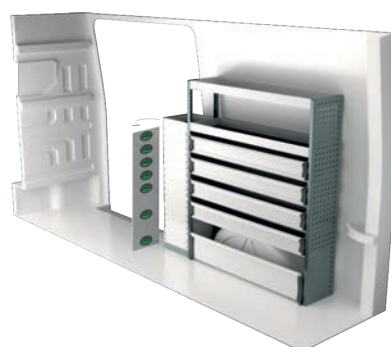
Art.No	LxDxH	Kg
F41900	2779x300x1440 mm	57



Art.No	LxDxH	Kg
F41901	1539x300x1440 mm	55



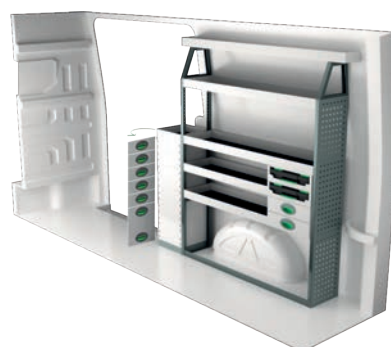
Art.No	LxDxH	Kg
F41902	2779x300x1440 mm	84



Art.No	LxDxH	Kg
F41903	1539x300x1440 mm	78



Art.No	LxDxH	Kg
F41904	2904x470x1440 mm	136



Art.No	LxDxH	Kg
F41905	1662x300x1735 mm	79



Art.No	LxDxH	Kg
F41906	2869x300x1735 mm	118

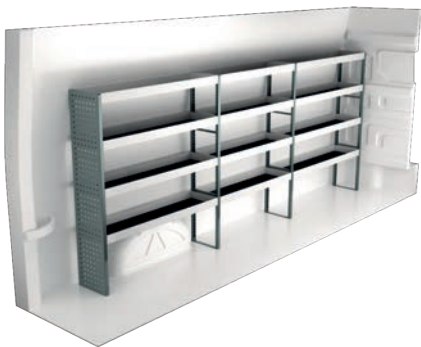


Art.No	LxDxH	Kg
F41907	1599x470x855 mm	100

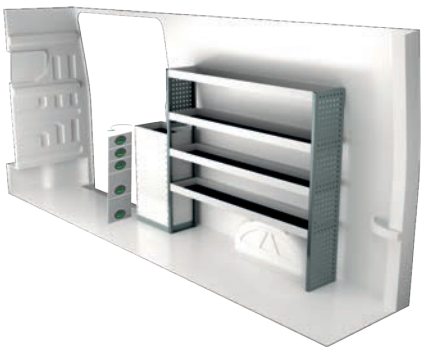
VW CRAFTER L4H3

For price information, mounting time and content in our van racking packages, scan the QR code on the first page.

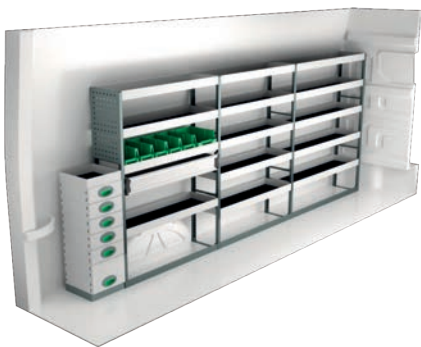
On electric and hybrid vans we recommend mounting by an experienced installer. Batteries and cable harnesses for approximately 400 volt must be taken in consideration. Cost of a floor may be added.



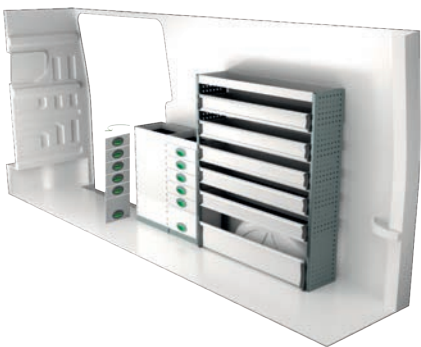
Art.No	LxDxH	Kg
F41920	3474x300x1440 mm	72



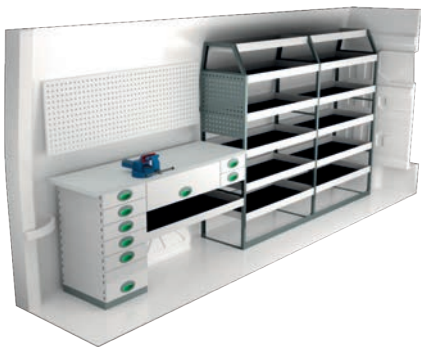
Art.No	LxDxH	Kg
F41921	2101x300x1440 mm	65



Art.No	LxDxH	Kg
F41922	3596x300x1440 mm	112



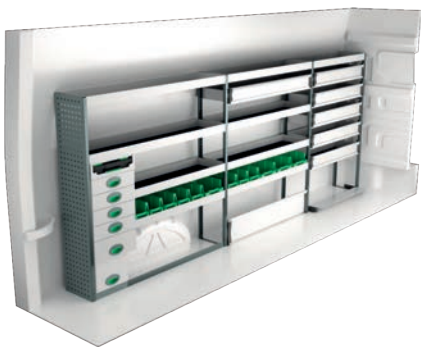
Art.No	LxDxH	Kg
F41923	2101x300x1440 mm	111



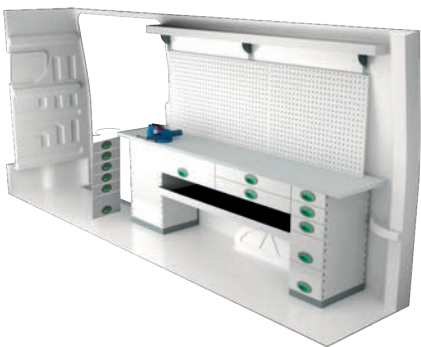
Art.No	LxDxH	Kg
F41924	3565x470x1670 mm	182



Art.No	LxDxH	Kg
F41925	2314x300x1440 mm	132



Art.No	LxDxH	Kg
F41926	3597x300x1440 mm	133

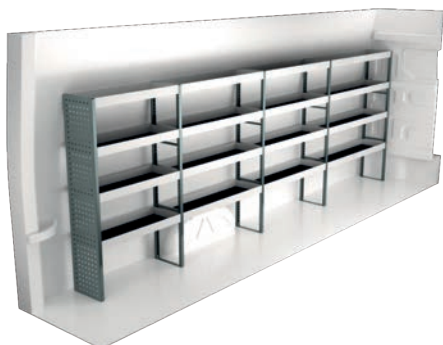


Art.No	LxDxH	Kg
F41927	2340x470x855 mm	164

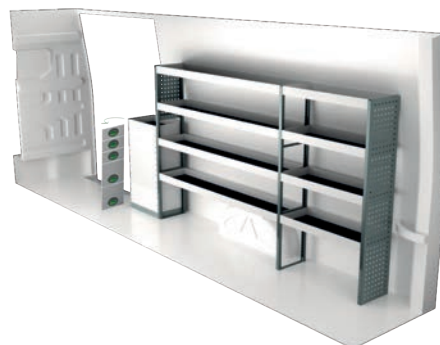
VW CRAFTER L5H3

For price information, mounting time and content in our van racking packages, scan the QR code on the first page.

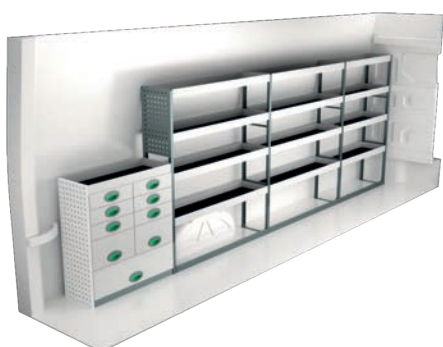
On electric and hybrid vans we recommend mounting by an experienced installer. Batteries and cable harnesses for approximately 400 volt must be taken in consideration. Cost of a floor may be added.



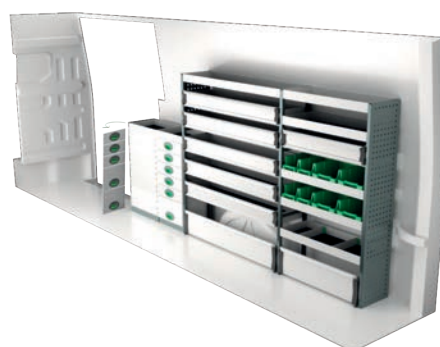
Art.No	LxDxH	Kg
F41940	4110x300x1440 mm	83



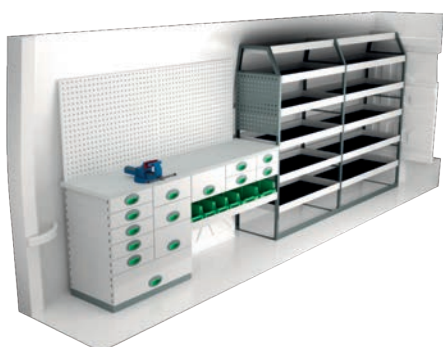
Art.No	LxDxH	Kg
F41941	2916x300x1440 mm	80



Art.No	LxDxH	Kg
F41942	4187x300x1440 mm	120



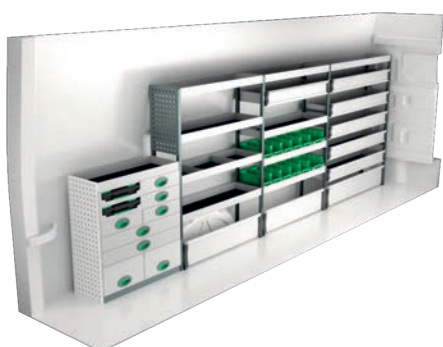
Art.No	LxDxH	Kg
F41943	2916x300x1440 mm	135



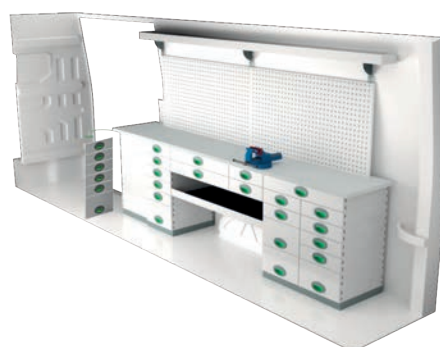
Art.No	LxDxH	Kg
F41944	4136x470x1670 mm	230



Art.No	LxDxH	Kg
F41945	2916x300x1440 mm	145



Art.No	LxDxH	Kg
F41946	4098x300x1440 mm	157



Art.No	LxDxH	Kg
F41947	2822x470x855 mm	232

VW AMAROK

For price information, mounting time and content in our van racking packages, scan the QR code on the first page.

On electric and hybrid vans we recommend mounting by an experienced installer. Batteries and cable harnesses for approximately 400 volt must be taken in consideration. Cost of a floor may be added.



Art.No	Height	Kg
F45211	250	66



Art.No	Height	Kg
F45213	470	75



GENERALLY

The kits include what you see in the drawing as well as installation parts, rubber mats to all shelves and foam to the drawers.

System Edström Bilinredningar AB is certified according to SS-EN ISO 9001:2015 to secure the administrative quality and to give us the possibility to keep a high accuracy on deliveries.

All material used in System Edström can be recycled to 100%. We are also certified according to SS-EN ISO 14001:2015.



REMEMBER

Now that you have chosen to have System Edström in your vehicle you have taken the first and most important step to make your mobile workshop safe and functional. From here on it is up to you how safe and functional your working place will be.

Remember;
You as the driver has the full responsibility if you or any one else is injured if the cargo is poorly secured. It is also your responsibility to make sure that the interior is mounted in the safest way possible whatever your choice of workshop, even if they are professionals with knowhow and long experience.

Make sure NOT to exceed the maximum payload of the vehicle.

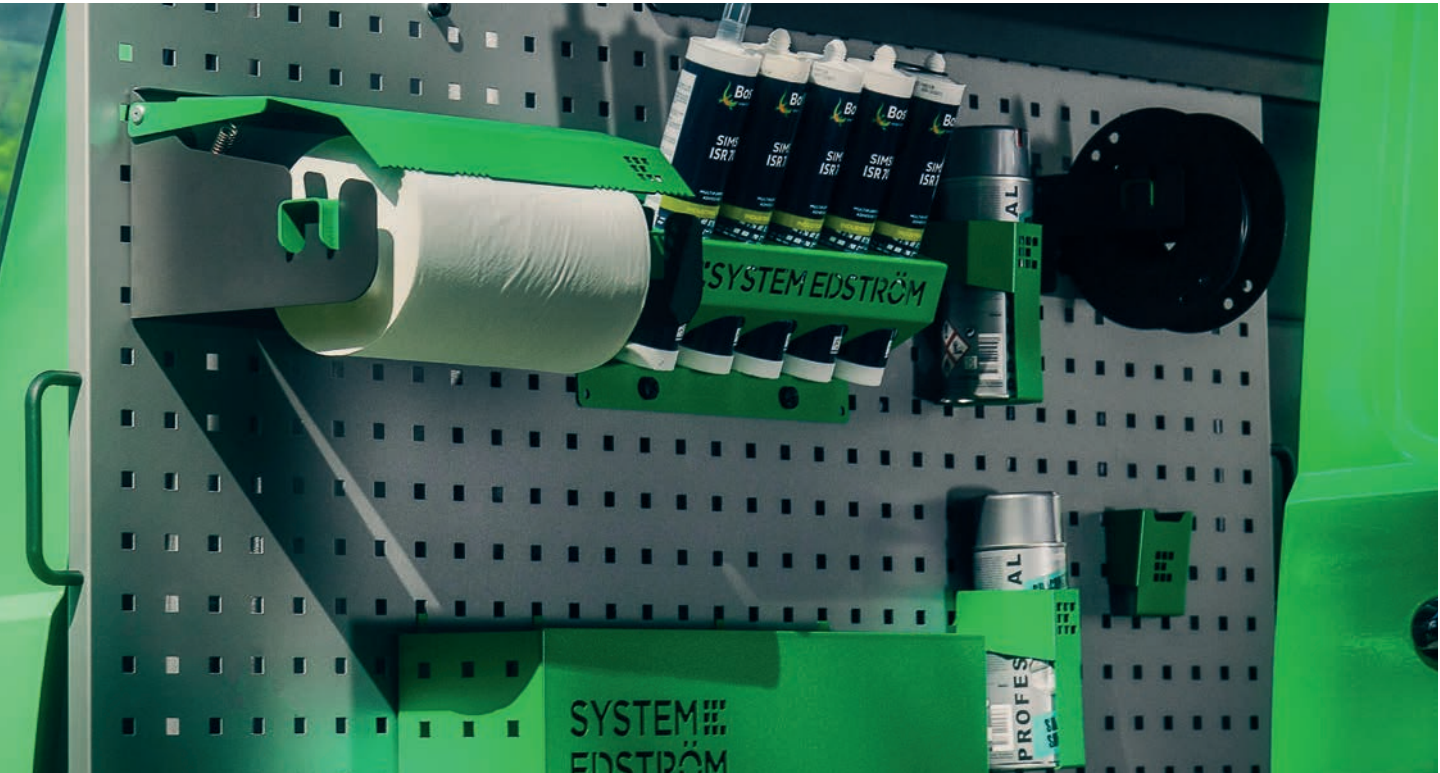


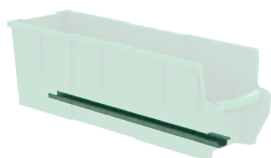
SECURITY

We crash test our racking continuously at RISE Research Institute of Sweden AB. The crash tests are carried out according to the standard INRS NS 286 which applies to van racking.

Other types of tests are also carried out at test institutes, for example shake tests that simulate several years of use on the road. We also carry out our own tensile and pressure tests, to check, for example, the strength of load securing products.

Find out more about our company and products at www.systemedstrom.com.





Plastic bin for shelves

Depth	Width	Height	Kg	Part.No
300	145	154	0,4	3050
300	235	154	0,5	3052
470	145	154	0,5	3055
470	235	154	0,5	3057

Transparent lid for plastic bins

Depth	Width	Fits	Kg	Part.No
300	150	3050	0,2	3060
300	240	3052	0,2	3062
470	150	3055	0,2	3065
470	240	3057	0,4	3067

Dividers for plastic bins

Width	Height	Fits	Part.No
140	154	3050, 55	3070
230	154	3052, 57	3072

Bracket for dropfront shelves

Depth	Kg	Part.No
300	0,1	3081
470	0,2	3082



Vice

Depth	Width	Height	Kg	Part.No
360	135	140	10,3	5004

The forged vice is complete with pipe jaw and turning plate. Max opening 140 mm.



Vice Holders

Depth	Width	Height	⇒	Kg	Part.No
1110	170	195	600	9,4	5012
1110	170	80	600	8,9	5013

Plate measurement 170x158 mm. Cover 2950 is included.



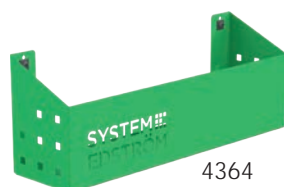
4370



4360



4362



4364

Pegboard tray

Depth	Width	Height	Kg	Part.No
82	200	80	0,5	4360
82	285	102	0,8	4362
122	455	122	1,5	4364
153	179	575	3,0	4370

A number of different trays that solve (almost) all storage problems.



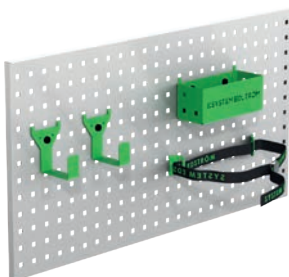
Internal ladder holder

Length	Kg	Part.No
2400	5,5	T8900

Store your ladder on the inside of the roof, pull it back to the rear door in a simple operation. The aluminum rail comes in two parts with a joining piece.



Accessory package No. 1

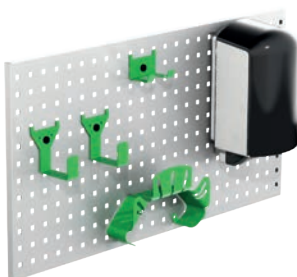


Art Nr

F11001

Pegboard not included.

Accessory package No. 2

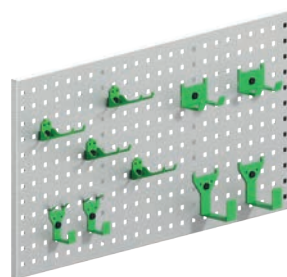


Art Nr

F11002

Pegboard not included.

Accessory package No. 3



Art Nr

F11004

Pegboard not included.

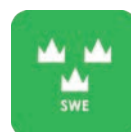
www.systemedstrom.com



WARRANTY



SAFETY



QUALITY

**SYSTEM
EDSTRÖM**

SYSTEM EDSTRÖM BILINREDNINGAR AB
Raseborgsgatan 11
164 74 Kista
Sweden

CONTACT

Order +46 (0)10 102 95 00
Sales +46 (0)10 102 95 01
Switchboard +46 (0)8 590 920 20
info@edstrom.se