

— WE CREATE MOBILE WORKPLACES —



NISSAN

Townstar, Primastar & Interstar

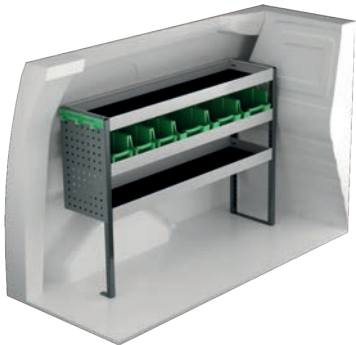


SYSTEM 
EDSTRÖM

NISSAN TOWNSTAR L1

For price information, mounting time and content in our van racking packages, scan the QR code on the first page.

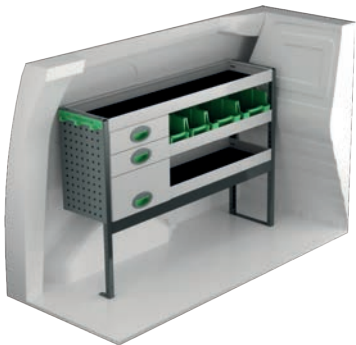
On electric and hybrid vans we recommend mounting by an experienced installer. Batteries and cable harnesses for approximately 400 volt must be taken in consideration. Cost of a floor may be added.



Art.No	LxDxH	Kg
F42320	1239x300x890 mm	23



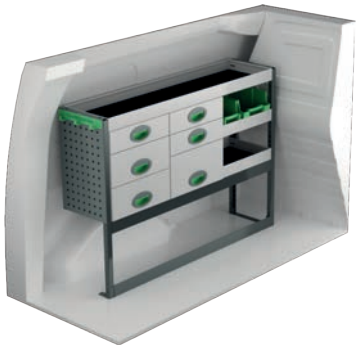
Art.No	LxDxH	Kg
F42321	848x300x890 mm	17



Art.No	LxDxH	Kg
F42322	1239x300x890 mm	32



Art.No	LxDxH	Kg
F42323	804x300x890 mm	31



Art.No	LxDxH	Kg
F42324	1239x300x890 mm	43



Art.No	LxDxH	Kg
F42325	804x300x890 mm	40



Art.No	Height	Kg
F42334	250	84

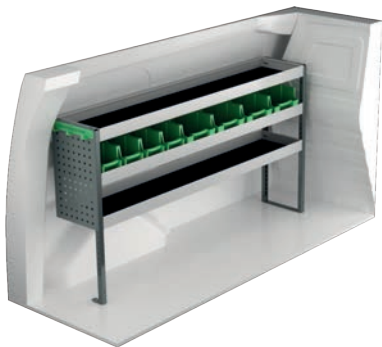


Art.No	Height	Kg
F42337	470	75

NISSAN TOWNSTAR L2

For price information, mounting time and content in our van racking packages, scan the QR code on the first page.

On electric and hybrid vans we recommend mounting by an experienced installer. Batteries and cable harnesses for approximately 400 volt must be taken in consideration. Cost of a floor may be added.



Art.No	LxDxH	Kg
F42340	1631x300x890 mm	28



Art.No	LxDxH	Kg
F42341	971x300x890 mm	22



Art.No	LxDxH	Kg
F42342	1631x300x890 mm	39



Art.No	LxDxH	Kg
F42343	894x300x890 mm	32



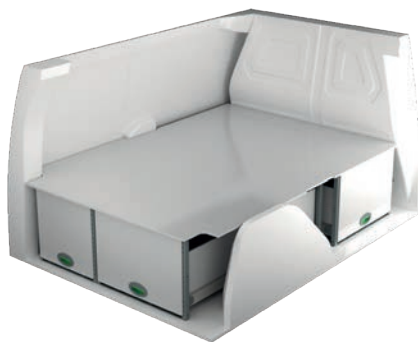
Art.No	LxDxH	Kg
F42344	1572x300x890 mm	47



Art.No	LxDxH	Kg
F42345	894x300x890 mm	41



Art.No	Height	Kg
F42351	250	90



Art.No	Height	Kg
F42353	470	102

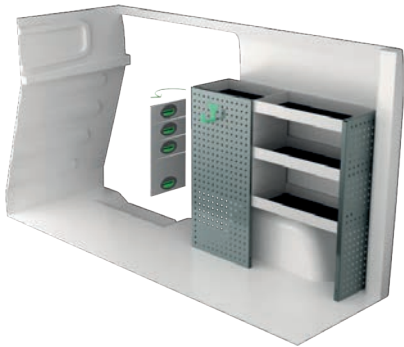
NISSAN PRIMASTAR L1

For price information, mounting time and content in our van racking packages, scan the QR code on the first page.

On electric and hybrid vans we recommend mounting by an experienced installer. Batteries and cable harnesses for approximately 400 volt must be taken in consideration. Cost of a floor may be added.



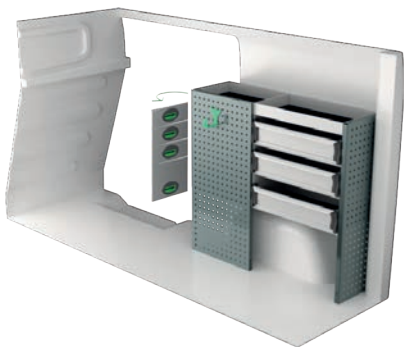
Art.No	LxDxH	Kg
F40840	1998x300x1000 mm	34



Art.No	LxDxH	Kg
F40841	1107x300x1000 mm	40



Art.No	LxDxH	Kg
F40842	1998x300x1220 mm	59



Art.No	LxDxH	Kg
F40843	1107x300x1000 mm	47



Art.No	LxDxH	Kg
F40844	1998x300x1000 mm	52



Art.No	LxDxH	Kg
F40845	1147x300x1220 mm	51



Art.No	Height	Kg
F40856	250	101

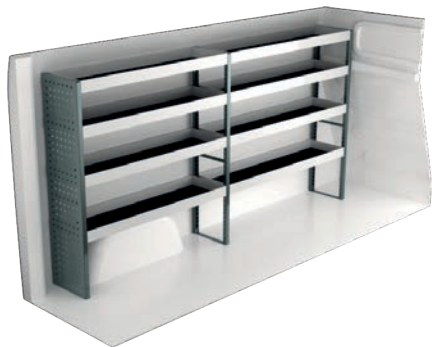


Art.No	Height	Kg
F40858	470	123

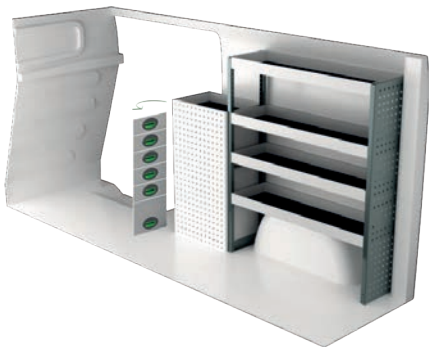
NISSAN PRIMASTAR L2

For price information, mounting time and content in our van racking packages, scan the QR code on the first page.

On electric and hybrid vans we recommend mounting by an experienced installer. Batteries and cable harnesses for approximately 400 volt must be taken in consideration. Cost of a floor may be added.



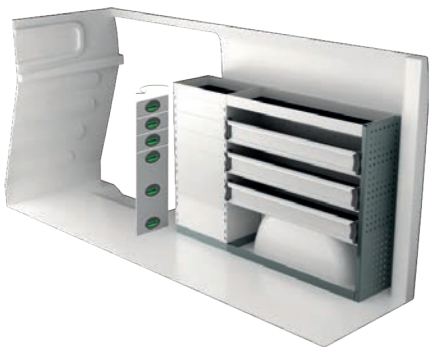
Art.No	LxDxH	Kg
F40860	2356x300x1220 mm	48



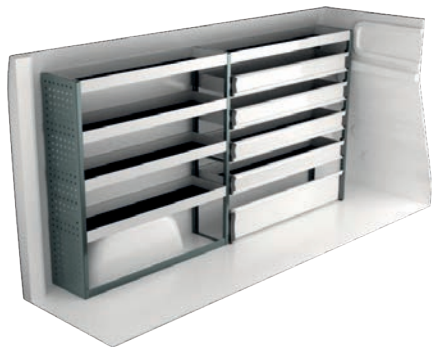
Art.No	LxDxH	Kg
F40861	1530x300x1220 mm	62



Art.No	LxDxH	Kg
F40862	2356x300x1000 mm	56



Art.No	LxDxH	Kg
F40863	1500x300x1000 mm	63



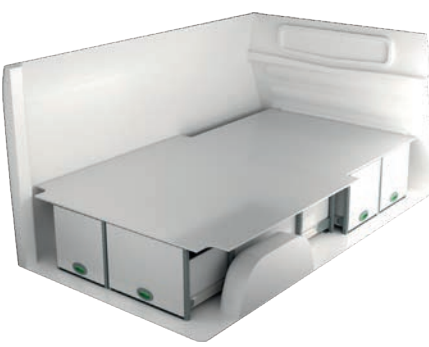
Art.No	LxDxH	Kg
F40864	2356x300x1220 mm	66



Art.No	LxDxH	Kg
F40865	1500x300x1000mm	83



Art.No	Height	Kg
F40876	250	118

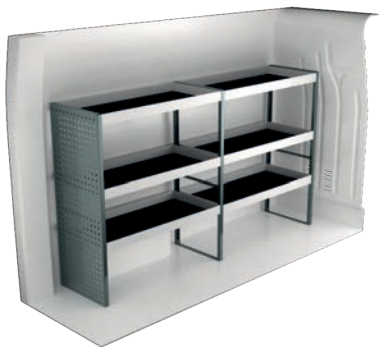


Art.No	Height	Kg
F40878	470	149

NISSAN INTERSTAR L1H1

For price information, mounting time and content in our van racking packages, scan the QR code on the first page.

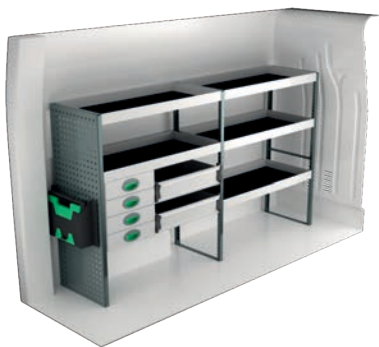
On electric and hybrid vans we recommend mounting by an experienced installer. Batteries and cable harnesses for approximately 400 volt must be taken in consideration. Cost of a floor may be added.



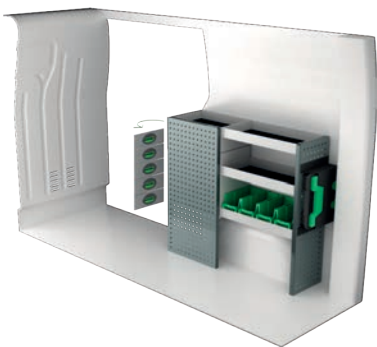
Art.No	LxDxH	Kg
F40540	2091x470x1220 mm	51



Art.No	LxDxH	Kg
F40541	1108x300x1000 mm	41



Art.No	LxDxH	Kg
F40542	2180x470x1220 mm	78



Art.No	LxDxH	Kg
F40543	1197x300x1000 mm	47



Art.No	LxDxH	Kg
F40544	2091x300x1515 mm	76



Art.No	LxDxH	Kg
F40545	1108x300x1000 mm	57



Art.No	LxDxH	Kg
F40546	2091x300x1220 mm	84

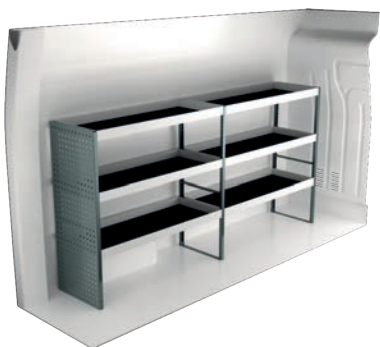


Art.No	LxDxH	Kg
F40547	1063x470x1220 mm	55

NISSAN INTERSTAR L2H2

For price information, mounting time and content in our van racking packages, scan the QR code on the first page.

On electric and hybrid vans we recommend mounting by an experienced installer. Batteries and cable harnesses for approximately 400 volt must be taken in consideration. Cost of a floor may be added.



Art.No	LxDxH	Kg
F40500	2449x470x1220 mm	56



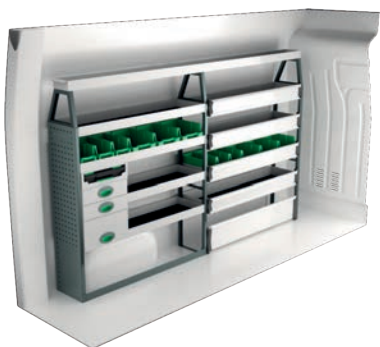
Art.No	LxDxH	Kg
F40501	1287x300x890 mm	44



Art.No	LxDxH	Kg
F40502	2449x470x1220 mm	86



Art.No	LxDxH	Kg
F40503	1319x300x1220 mm	69



Art.No	LxDxH	Kg
F40504	2449x300x1515 mm	93



Art.No	LxDxH	Kg
F40505	1330x470x855 mm	91



Art.No	LxDxH	Kg
F40506	2449x470x1510 mm	102

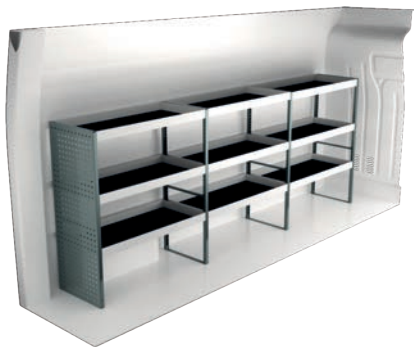


Art.No	LxDxH	Kg
F40507	1242x470x1220 mm	61

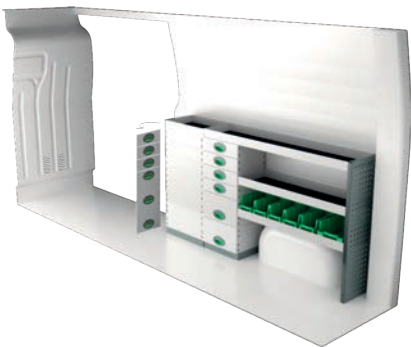
NISSAN INTERSTAR L3H2

For price information, mounting time and content in our van racking packages, scan the QR code on the first page.

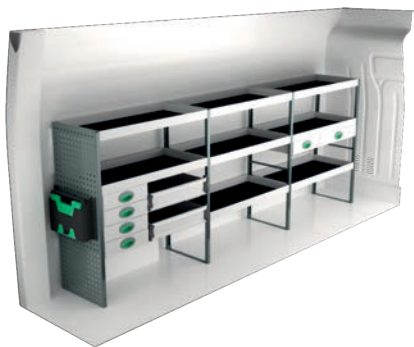
On electric and hybrid vans we recommend mounting by an experienced installer. Batteries and cable harnesses for approximately 400 volt must be taken in consideration. Cost of a floor may be added.



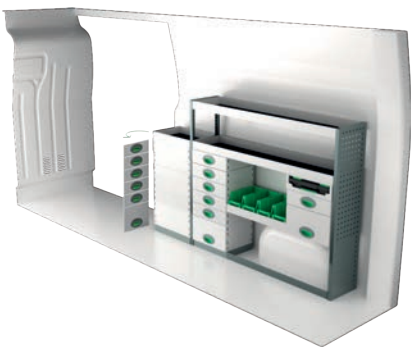
Art.No	LxDxH	Kg
F40520	3120x470x1220 mm	71



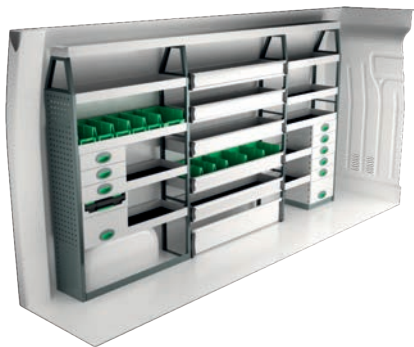
Art.No	LxDxH	Kg
F40521	1892x300x1000 mm	83



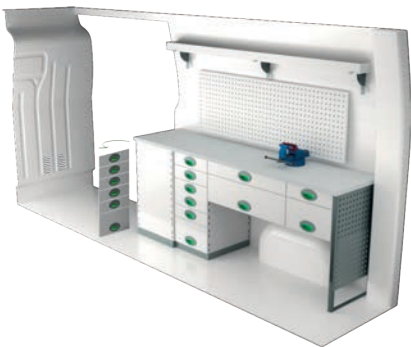
Art.No	LxDxH	Kg
F40522	3120x470x1220 mm	111



Art.No	LxDxH	Kg
F40523	1924x300x1220 mm	96



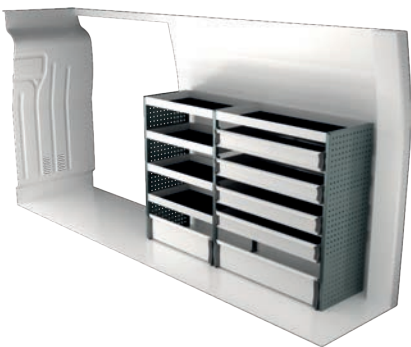
Art.No	LxDxH	Kg
F40524	3086x300x1735 mm	143



Art.No	LxDxH	Kg
F40525	2071x470x855 mm	150



Art.No	LxDxH	Kg
F40526	3054x470x1526 mm	148

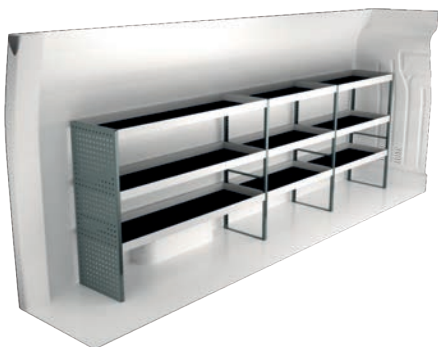


Art.No	LxDxH	Kg
F40527	1879x470x1220 mm	79

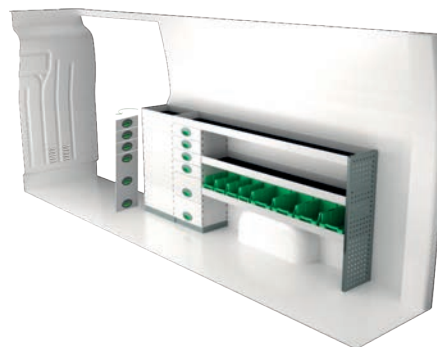
NISSAN INTERSTAR L4H2

For price information, mounting time and content in our van racking packages, scan the QR code on the first page.

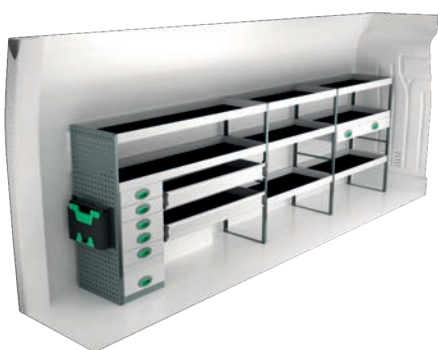
On electric and hybrid vans we recommend mounting by an experienced installer. Batteries and cable harnesses for approximately 400 volt must be taken in consideration. Cost of a floor may be added.



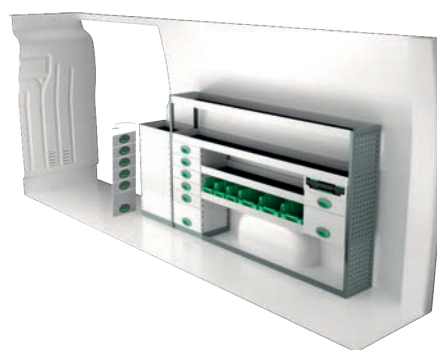
Art.No	LxDxH	Kg
F40560	3691x470x1220 mm	82



Art.No	LxDxH	Kg
F40561	2463x300x1000 mm	93



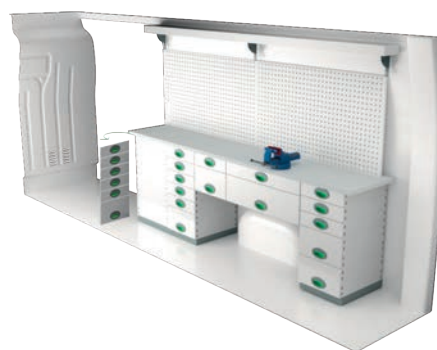
Art.No	LxDxH	Kg
F40562	3780x470x1220 mm	139



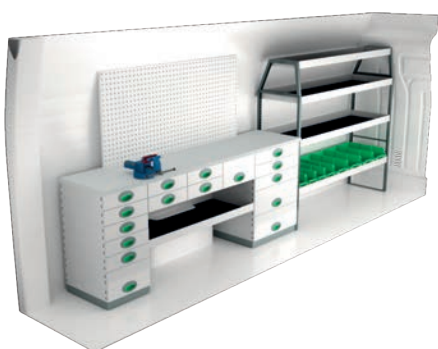
Art.No	LxDxH	Kg
F40563	2495x300x1220 mm	115



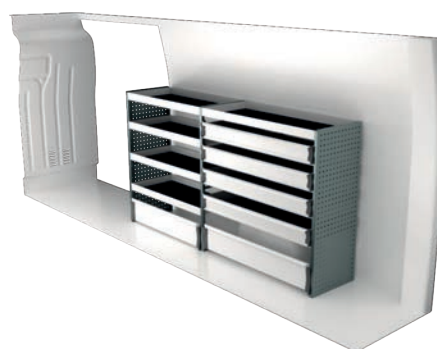
Art.No	LxDxH	Kg
F40564	3691x300x1735 mm	165



Art.No	LxDxH	Kg
F40565	2430x470x855 mm	199



Art.No	LxDxH	Kg
F40566	3805x470x1526 mm	205



Art.No	LxDxH	Kg
F40567	2271x470x1220 mm	89

INFORMATION



GENERALLY

The kits include what you see in the drawing as well as installation parts, rubber mats to all shelves and foam to the drawers.

System Edström Bilinredningar AB is certified according to SS-EN ISO 9001:2015 to secure the administrative quality and to give us the possibility to keep a high accuracy on deliveries.

All material used in System Edström can be recycled to 100%. We are also certified according to SS-EN ISO 14001:2015.



REMEMBER

Now that you have chosen to have System Edström in your vehicle you have taken the first and most important step to make your mobile workshop safe and functional. From here on it is up to you how safe and functional your working place will be.

Remember;
You as the driver has the full responsibility if you or any one else is injured if the cargo is poorly secured. It is also your responsibility to make sure that the interior is mounted in the safest way possible whatever your choice of workshop, even if they are professionals with knowhow and long experience.

Make sure NOT to exceed the maximum payload of the vehicle.



SECURITY

We crash test our racking continuously at RISE Research Institute of Sweden AB. The crash tests are carried out according to the standard INRS NS 286 which applies to van racking.

Other types of tests are also carried out at test institutes, for example shake tests that simulate several years of use on the road. We also carry out our own tensile and pressure tests, to check, for example, the strength of load securing products.

Find out more about our company and products at www.systemedstrom.com.



Vice

Depth	Width	Height	Kg	Part.No
360	135	140	10,3	5004

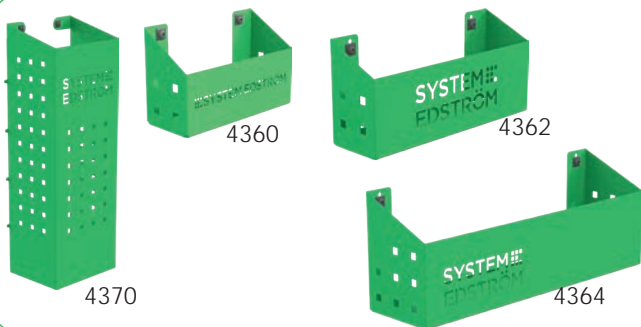
The forged vice is complete with pipe jaw and turning plate. Max opening 140 mm.



Vice Holders

Depth	Width	Height	⇔	Kg	Part.No
1110	170	195	600	9,4	5012
1110	170	80	600	8,9	5013

Plate measurement 170x158 mm. Cover 2950 is included.



Pegboard tray

Depth	Width	Height	Kg	Part.No
82	200	80	0,5	4360
82	285	102	0,8	4362
122	455	122	1,5	4364
153	179	575	3,0	4370

A number of different trays that solve (almost) all storage problems.



Internal ladder holder

Length	Kg	Part.No
2400	5,5	T8900

Store your ladder on the inside of the roof, pull it back to the rear door in a simple operation. The aluminum rail comes in two parts with a joining piece.



Hose/Cable rack

Depth	Width	Height	Kg	Part.No
79	267	168	0,5	4077

Tube holder

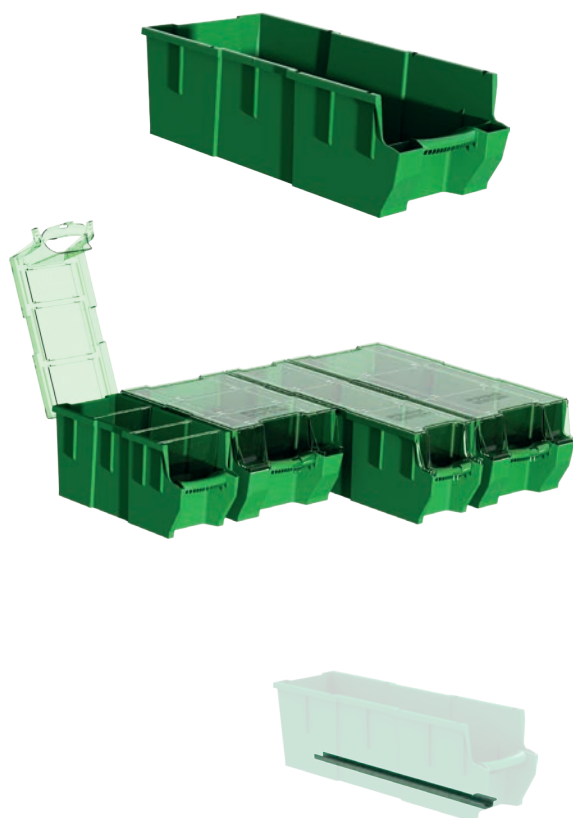
66	194	123	0,4	4349
----	-----	-----	-----	------



Universal hook

Depth	Width	Height	Kg	Part.No
85	80	100	0,2	4356
61	83	55	0,1	4357

Simplicity at its best, heavy duty hooks, to be mount on a pegboard or hang it on the edge of a shelf.



Plastic bin for shelves

Depth	Width	Height	Kg	Part.No
300	145	154	0,4	3050
300	235	154	0,5	3052
470	145	154	0,5	3055
470	235	154	0,5	3057

Transparant lid for plastic bins

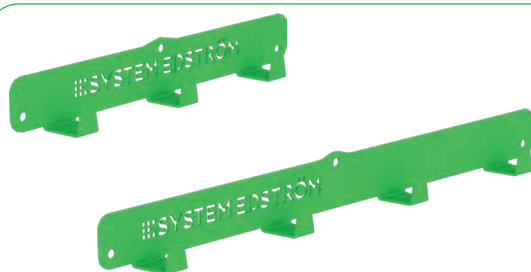
Depth	Width	Fits	Kg	Part.No
300	150	3050	0,2	3060
300	240	3052	0,2	3062
470	150	3055	0,2	3065
470	240	3057	0,4	3067

Dividers for plastic bins

Width	Height	Fits	Part.No
140	154	3050, 55	3070
230	154	3052, 57	3072

Bracket for dropfront shelves

Depth	Kg	Part.No
300	0,1	3081
470	0,2	3082



Clothes hook

Depth	Width	Height	Kg	Part.No
31	295	40	0,3	2706
31	465	40	0,5	2708

We call it a clothes hook but, needless to say, you can use it to hang up whatever you want on it.



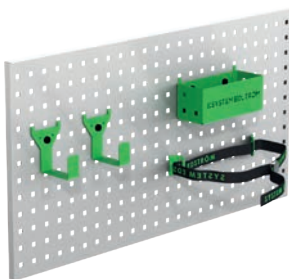
Strap with brackets

Information	Width	Part.No
1200 mm, nylon strap	25	4365
1000 mm, elastic strap	25	4366

The brackets will fit on our pegboards.



Accessory package No. 1

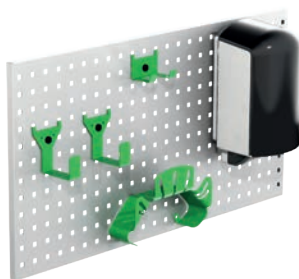


Art Nr

F11001

Pegboard not included.

Accessory package No. 2

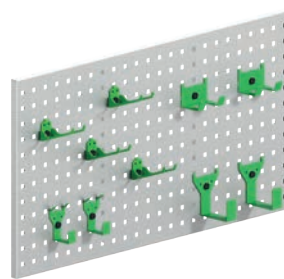


Art Nr

F11002

Pegboard not included.

Accessory package No. 3



Art Nr

F11004

Pegboard not included.

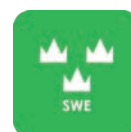
www.systemedstrom.com



WARRANTY



SAFETY



QUALITY

**SYSTEM
EDSTRÖM**

SYSTEM EDSTRÖM BILINREDNINGAR AB
Raseborgsgatan 11
164 74 Kista
Sweden

CONTACT

Order +46 (0)10 102 95 00
Sales +46 (0)10 102 95 01
Switchboard +46 (0)8 590 920 20
info@edstrom.se