

— CREATES MOBILE WORKPLACES —



FORD

Courier, Connect, Custom, Transit & Ranger

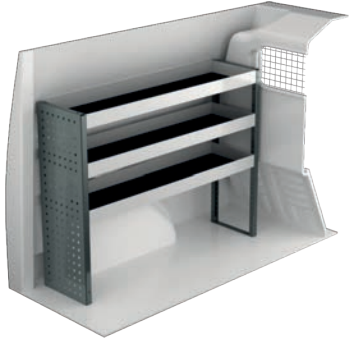


SYSTEM 
EDSTRÖM

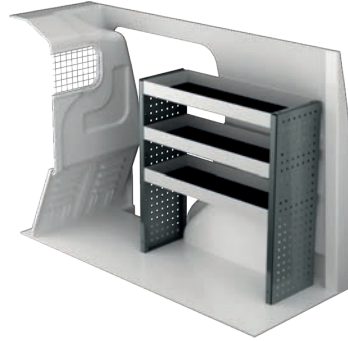
FORD TRANSIT COURIER

For price information, mounting time and content in our van racking packages, scan the QR code on the first page.

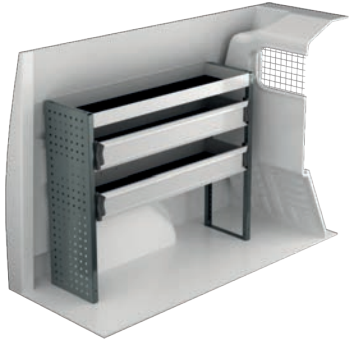
On electric and hybrid vans we recommend mounting by an experienced installer. Batteries and cable harnesses for approximately 400 volt must be taken in consideration. Cost of a floor may be added.



Art.No	LxDxH	Kg
F41300	1062x300x890 mm	20



Art.No	LxDxH	Kg
F41301	850x300x890 mm	16



Art.No	LxDxH	Kg
F41302	1062x300x890 mm	23



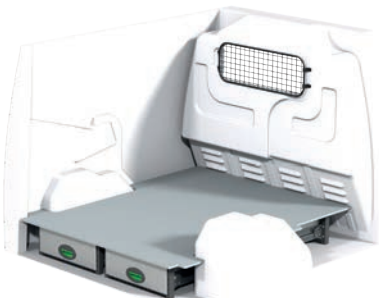
Art.No	LxDxH	Kg
F41303	850x300x890 mm	20



Art.No	LxDxH	Kg
F41304	1062x300x890 mm	28



Art.No	LxDxH	Kg
F41305	727x300x890 mm	27



Art.No	Height	Kg
F41315	190 mm	51



Art.No	Height	Kg
F41316	190 mm / 505 mm	75

FORD TRANSIT CONNECT L1

For price information, mounting time and content in our van racking packages, scan the QR code on the first page.

On electric and hybrid vans we recommend mounting by an experienced installer. Batteries and cable harnesses for approximately 400 volt must be taken in consideration. Cost of a floor may be added.



Art.No	LxDxH	Kg
F41100	1241x300x890 mm	22



Art.No	LxDxH	Kg
F41101	850x300x890 mm	24



Art.No	LxDxH	Kg
F41102	1241x300x890 mm	37



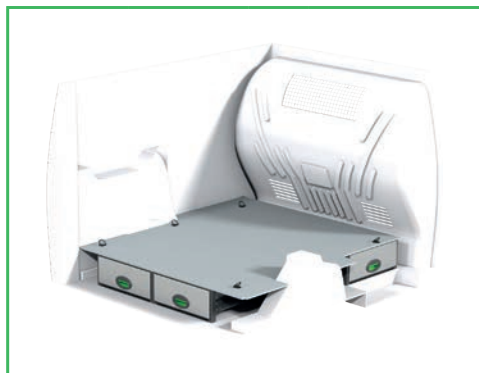
Art.No	LxDxH	Kg
F41103	725x300x890 mm	38



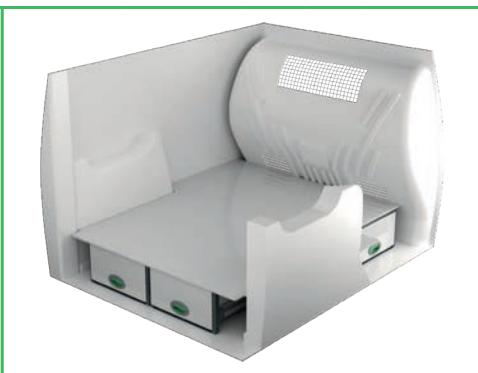
Art.No	LxDxH	Kg
F41108	1241x300x890 mm	35



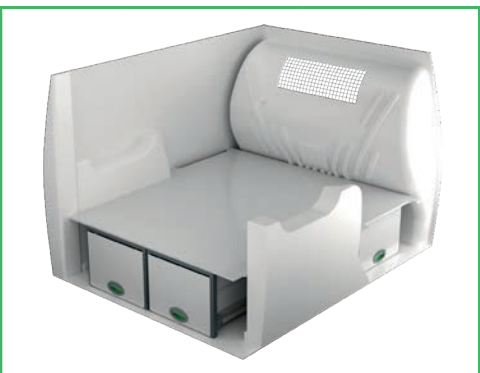
Art.No	LxDxH	Kg
F41107	770x300x890 mm	51



Art.No	Height	Kg
F41110	190	60



Art.No	Height	Kg
F41113	250	71



Art.No	Height	Kg
F41114	360	78

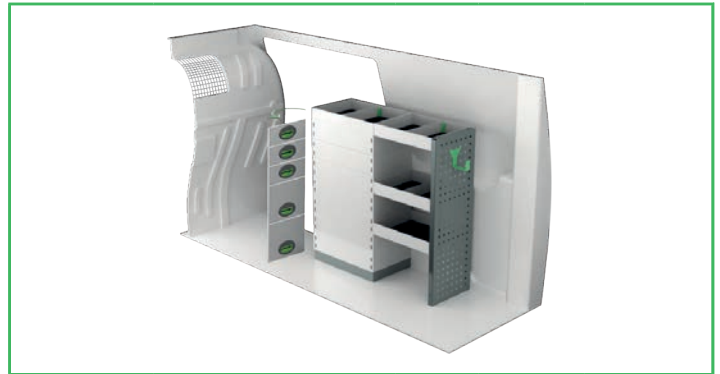
FORD TRANSIT CONNECT L2

For price information, mounting time and content in our van racking packages, scan the QR code on the first page.

On electric and hybrid vans we recommend mounting by an experienced installer. Batteries and cable harnesses for approximately 400 volt must be taken in consideration. Cost of a floor may be added.



Art.No	LxDxH	Kg
F41130	1665x300x890 mm	26



Art.No	LxDxH	Kg
F41131	895x300x890 mm	41



Art.No	LxDxH	Kg
F41132	1620x300x890 mm	57



Art.No	LxDxH	Kg
F41135	1063x300x890 mm	29



Art.No	LxDxH	Kg
F41134	1633x300x890 mm	51



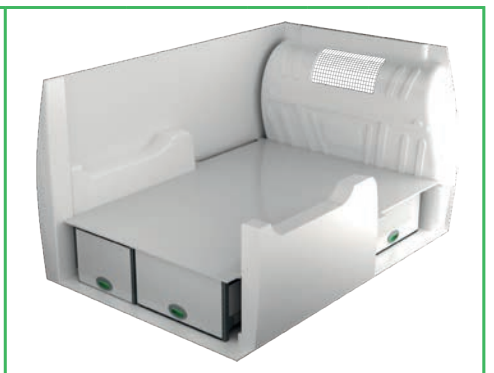
Art.No	LxDxH	Kg
F41137	940x300x890 mm	64



Art.No	Height	Kg
F41140	190	67



Art.No	Height	Kg
F41143	150	92

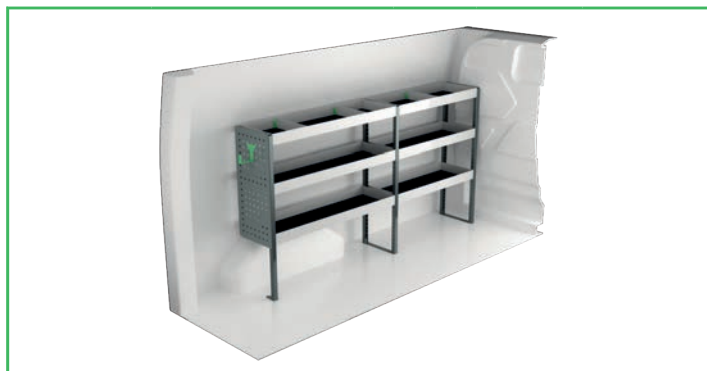


Art.No	Height	Kg
F41144	360	98

FORD TRANSIT CUSTOM 2933 mm wheel base

For price information, mounting time and content in our van racking packages, scan the QR code on the first page.

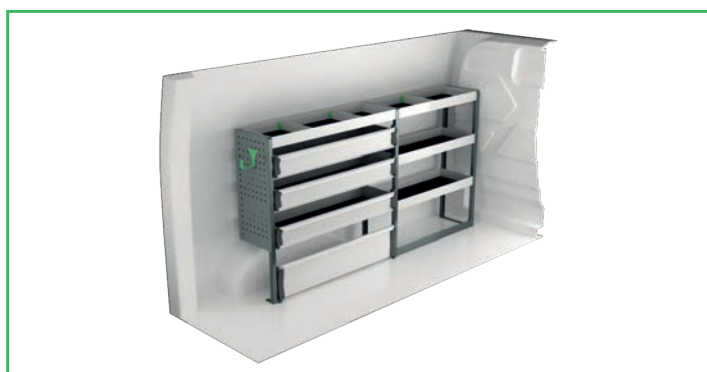
On electric and hybrid vans we recommend mounting by an experienced installer. Batteries and cable harnesses for approximately 400 volt must be taken in consideration. Cost of a floor may be added.



Art.No	LxDxH	Kg
F40700	1878x300x1000 mm	31



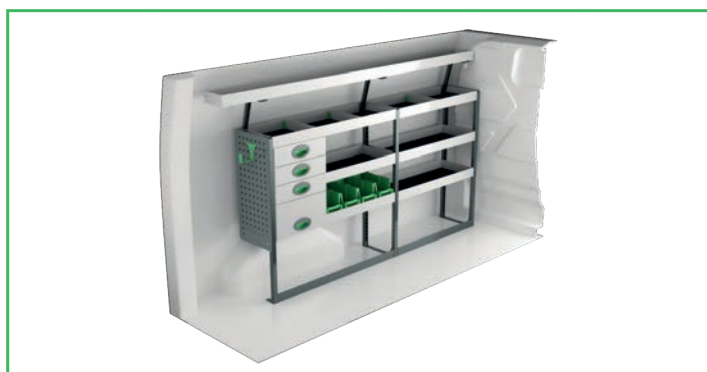
Art.No	LxDxH	Kg
F40701	1108x300x1000 mm	41



Art.No	LxDxH	Kg
F40702	1878x300x1000 mm	43



Art.No	LxDxH	Kg
F40703	1197x300x1000 mm	47



Art.No	LxDxH	Kg
F40704	1878x300x1000 mm	55



Art.No	LxDxH	Kg
F40705	1197x300x1000 mm	60



Art.No	Height	Kg
F40712	190	108



Art.No	Height	Kg
F40713	250	113

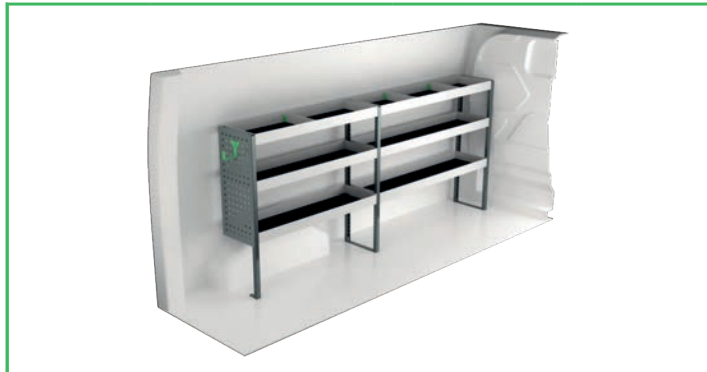


Art.No	Height	Kg
F40714	360	125

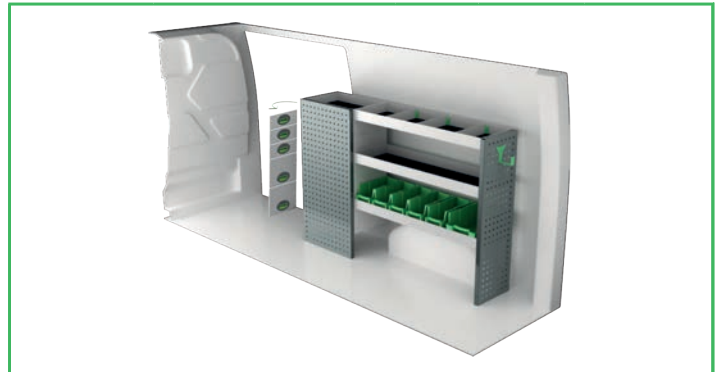
FORD TRANSIT CUSTOM 3300 mm wheel base

For price information, mounting time and content in our van racking packages, scan the QR code on the first page.

On electric and hybrid vans we recommend mounting by an experienced installer. Batteries and cable harnesses for approximately 400 volt must be taken in consideration. Cost of a floor may be added.



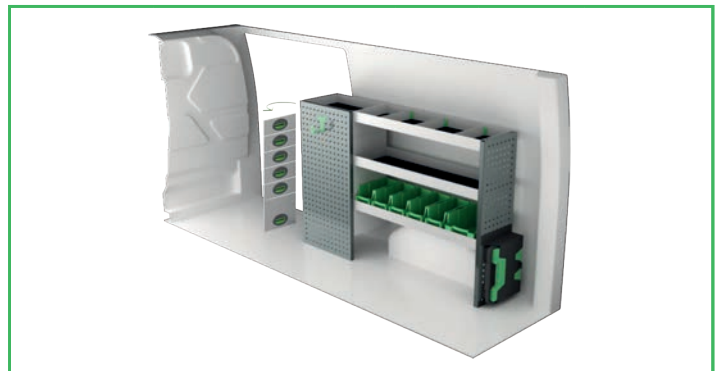
Art.No	LxDxH	Kg
F40720	2270x300x1000 mm	37



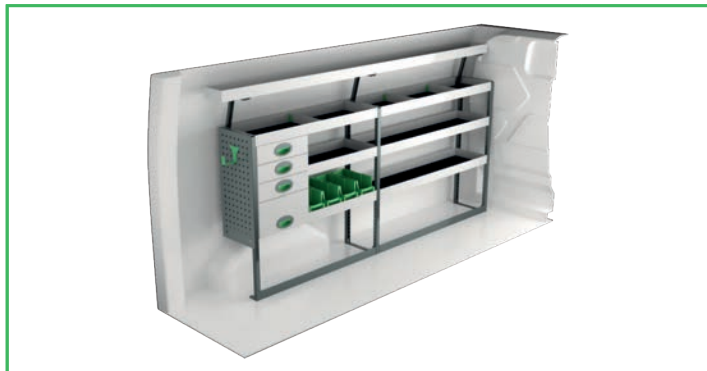
Art.No	LxDxH	Kg
F40721	1500x300x1000 mm	54



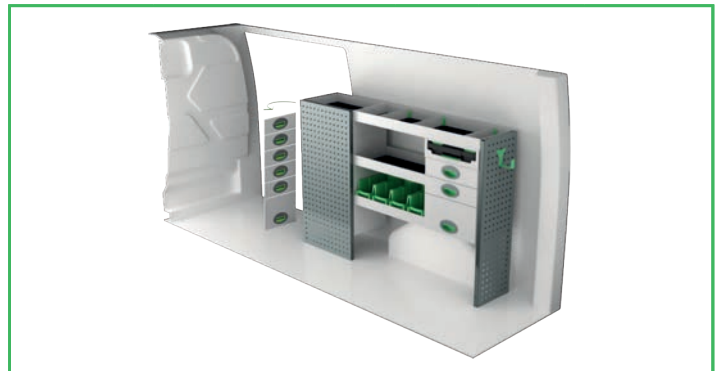
Art.No	LxDxH	Kg
F40722	2270x300x1000 mm	50



Art.No	LxDxH	Kg
F40723	1589x300x1000 mm	60



Art.No	LxDxH	Kg
F40724	2270x300x1000 mm	67



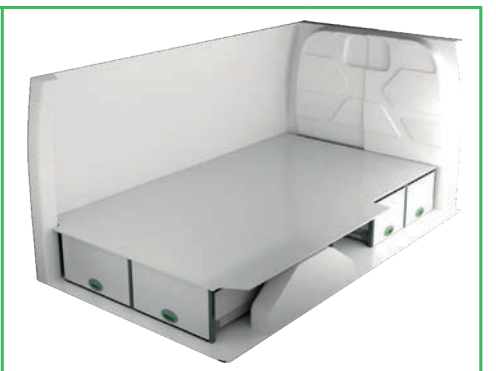
Art.No	LxDxH	Kg
F40725	1500x300x1000 mm	70



Art.No	Height	Kg
F40732	190	109



Art.No	Height	Kg
F40733	250	115



Art.No	Height	Kg
F40734	360	127

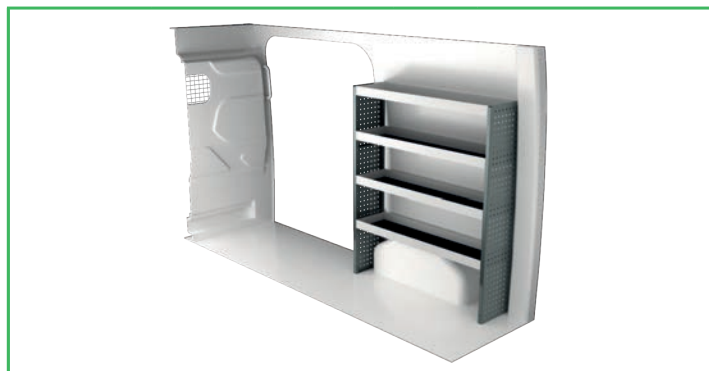
FORD TRANSIT L2H2

For price information, mounting time and content in our van racking packages, scan the QR code on the first page.

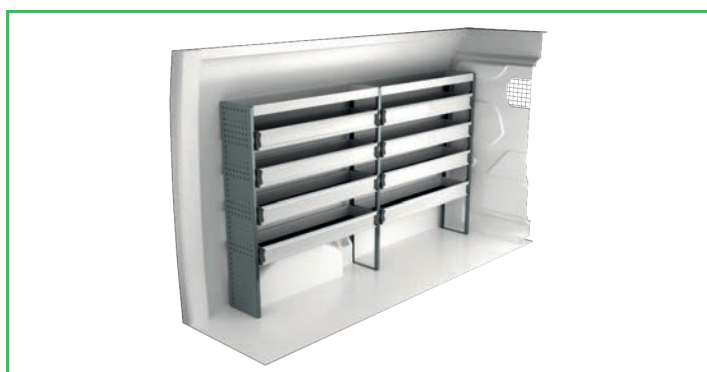
On electric and hybrid vans we recommend mounting by an experienced installer. Batteries and cable harnesses for approximately 400 volt must be taken in consideration. Cost of a floor may be added.



Art.No	LxDxH	Kg
F41330	2448x300x1440 mm	52



Art.No	LxDxH	Kg
F41331	1240x300x1440 mm	32



Art.No	LxDxH	Kg
F41332	2448x300x1440 mm	76



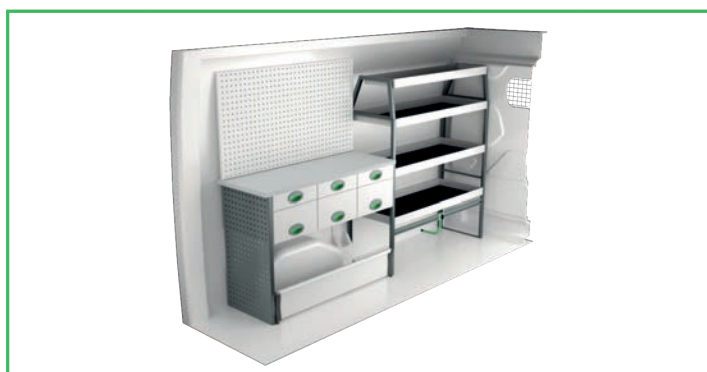
Art.No	LxDxH	Kg
F41333	1240x300x1440 mm	44



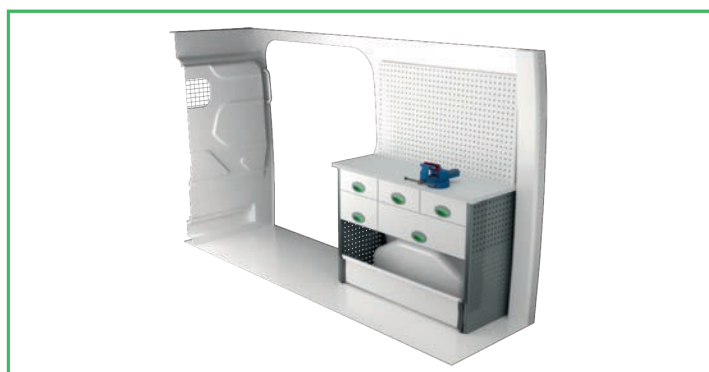
Art.No	LxDxH	Kg
F41334	2448x470x1565 mm	80



Art.No	LxDxH	Kg
F41335	1409x300x1000 mm	47



Art.No	LxDxH	Kg
F41336	2448x470x1510 mm	103



Art.No	LxDxH	Kg
F41337	1240x470x920 mm	82

FORD TRANSIT L3H2

For price information, mounting time and content in our van racking packages, scan the QR code on the first page.

On electric and hybrid vans we recommend mounting by an experienced installer. Batteries and cable harnesses for approximately 400 volt must be taken in consideration. Cost of a floor may be added.



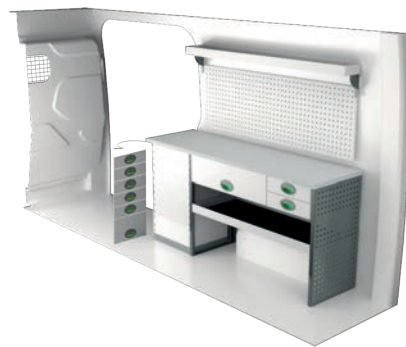
Art.No	LxDxH	Kg
F41350	2840x300x1440 mm	58



Art.No	LxDxH	Kg
F41351	1240x470x1000 mm	58



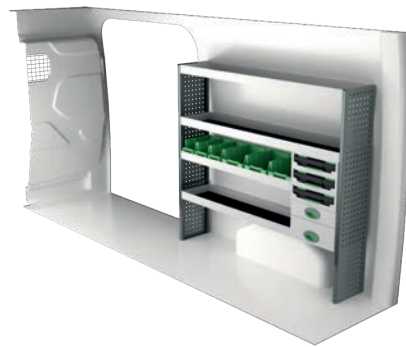
Art.No	LxDxH	Kg
F41352	2840x300x1440 mm	82



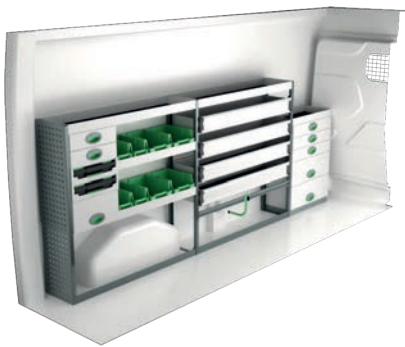
Art.No	LxDxH	Kg
F41353	1710x470x855 mm	102



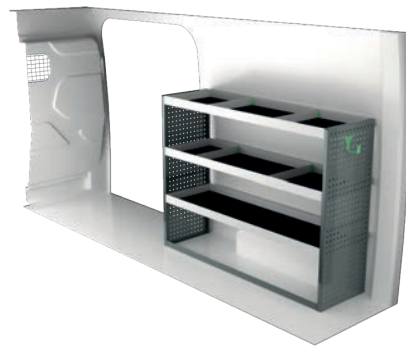
Art.No	LxDxH	Kg
F41354	2840x300x1670 mm	106



Art.No	LxDxH	Kg
F41355	1632x300x1440 mm	58



Art.No	LxDxH	Kg
F41356	3053x300x1220 mm	115



Art.No	LxDxH	Kg
F41357	1632x470x1220 mm	45

FORD RANGER

For price information, mounting time and content in our van racking packages, scan the QR code on the first page.

experienced installer. Batteries and cable harnesses for approximately 400 volt must be taken in consideration. Cost of a floor may be added.

On electric and hybrid vans we recommend mounting by an



Art.No	Height	Kg
F45100	214 mm	59



Art.No	Height	Kg
F45101	220 mm	52

INFORMATION



GENERALLY

The kits include what you see in the drawing as well as installation parts, rubber mats to all shelves and foam to the drawers. System Edström Bilinredningar AB is certified according to SS-EN ISO 9001:2015 to secure the administrative quality and to give us the possibility to keep a high accuracy on deliveries.

All material used in System Edström can be recycled to 100%. We are also certified according to SS-EN ISO 14001:2015.



REMEMBER

Now that you have chosen to have System Edström in your vehicle you have taken the first and most important step to make your mobile workshop safe and functional. From here on it is up to you how safe and functional your working place will be.

Remember; You as the driver has the full responsibility if you or any one else is injured if the cargo is poorly secured. It is also your responsibility to make sure that the interior is mounted in the safest way possible whatever your choice of workshop, even if they are professionals with knowhow and long experience.

Make sure NOT to exceed the maximum payload of the vehicle.



SECURITY

Our products are tested in two ways, the first and most important is two crashtests, one (ECE 17:07) performed by Milbrook in England and another one performed by Valutec in France (INRS NS286). Learn more about us on our homepage, www.systemedstrom.com.





Vice

Depth	Width	Height	Kg	Part.No
360	135	140	10,3	5004

The forged vice is complete with pipe jaw and turning plate. Max opening 140 mm.



Vice Holders

Depth	Width	Height	Kg	Part.No
1110	210	195	9,4	5012
1110	210	80	8,9	5013

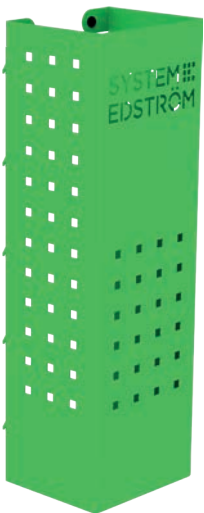
Plate measurement 180x210 mm. Cover 2950 is included.



Gas bottle holder adjustable

Depth	Width	Height	Tube Ø	Kg	Part.No
150	300	97	< 300	0,9	2910

Liquefied petroleum gas P6 (bottles with 320 mm Ø can be stored after modification).



4370



4360



4362



4364

Pegboard tray

Depth	Width	Height	Kg	Part.No
82	200	80	0,5	4360
82	285	102	0,8	4362
122	455	122	1,5	4364
153	179	575	3,0	4370

A number of different trays that solve (almost) all storage problems.



Internal ladder holder

Length	Kg	Part.No
2400	5,5	T8900

Store your ladder on the inside of the roof, pull it back to the rear door in a simple operation. The aluminum rail comes in two parts with a joining piece.





4077



4349

Hose/Cable rack

Depth	Width	Height	Kg	Part.No
79	267	168	0,5	4077

Tube holder

66	194	123	0,4	4349
----	-----	-----	-----	------



4356

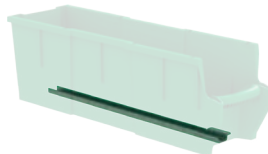


4357

Universal hook

Depth	Width	Height	Kg	Part.No
85	80	100	0,2	4356
61	83	55	0,1	4357

Simplicity at its best, heavy duty hooks, to be mount on a pegboard or hang it on the edge of a shelf.



Plastic bin for shelves

Depth	Width	Height	Kg	Part.No
300	145	154	0,4	3050
300	235	154	0,5	3052
470	145	154	0,5	3055
470	235	154	0,5	3057

Transparent lid for plastic bins

Depth	Width	Fits	Kg	Part.No
300	150	3050	0,2	3060
300	240	3052	0,2	3062
470	150	3055	0,2	3065
470	240	3057	0,4	3067

Dividers for plastic bins

Width	Height	Fits	Part.No
140	154	3050, 55	3070
230	154	3052, 57	3072

Bracket for dropfront shelves

Depth	Kg	Part.No
300	0,1	3081
470	0,2	3082



Clothes hook

Depth	Width	Height	Kg	Part.No
31	295	40	0,3	2706
31	465	40	0,5	2708

We call it a clothes hook but, needless to say, you can use it to hang up whatever you want on it.

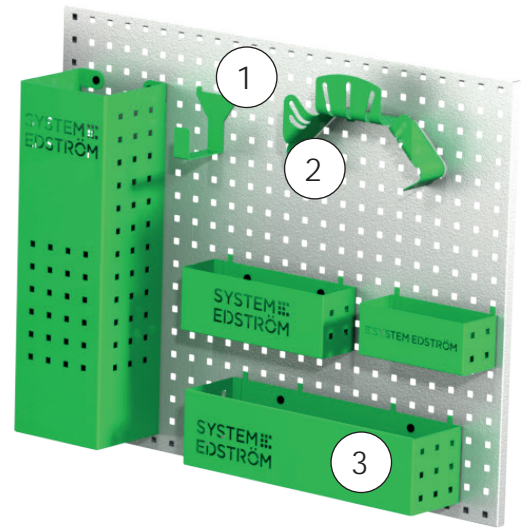
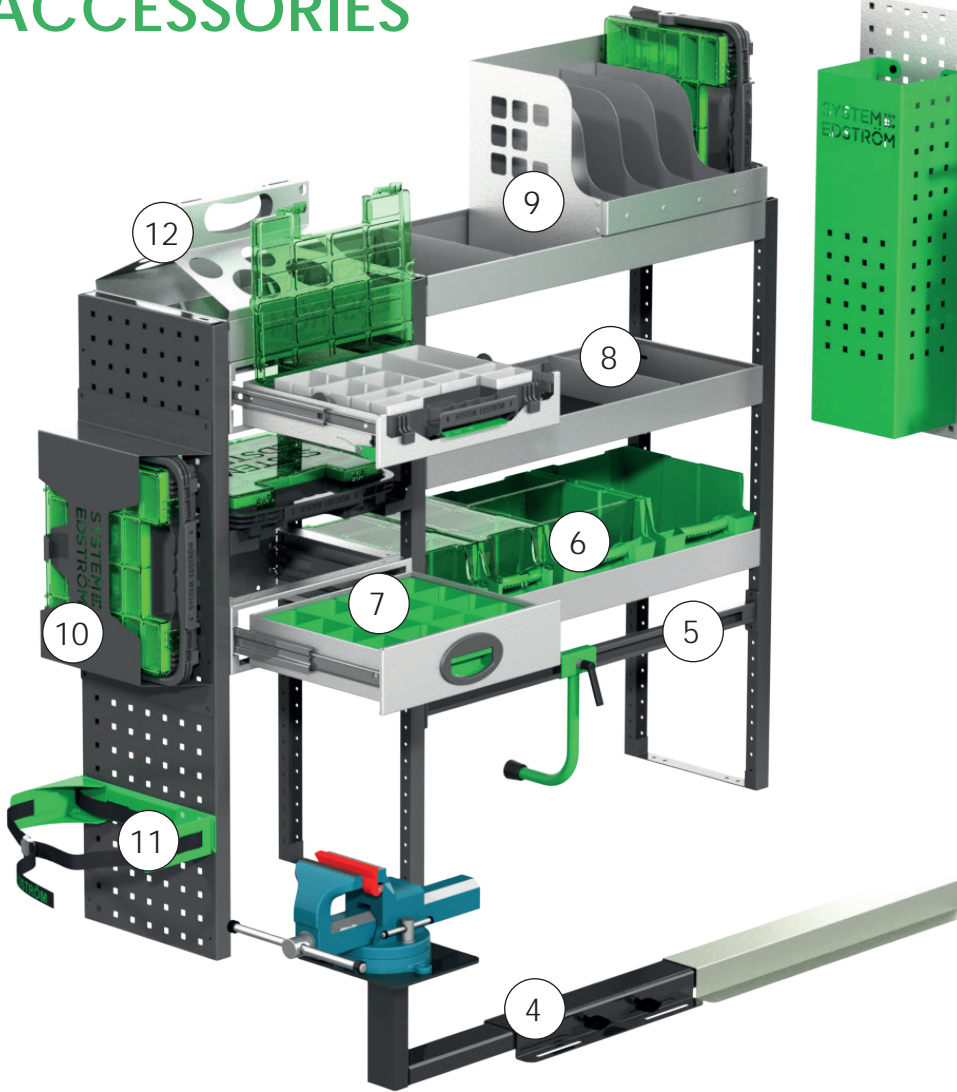


Strap with brackets

Information	Width	Part.No
1200 mm, nylon strap	25	4365
1000 mm, elastic strap	25	4366

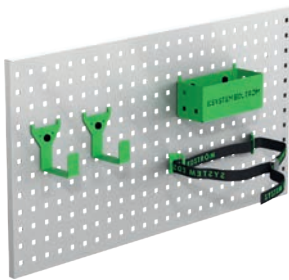
The brackets will fit on our pegboards.

ACCESSORIES



Pos.	Description
1	Universal hook
2	Cable/Hose rack
3	Pegboard basket
4	Vice and holders
5	Case support
6	Plastic bins
7	Drawer inserts
8	Shelf dividers
9	Tool case/File holder
10	Tool case
11	Gas bottle holders
12	Can/Tube holder

Accessory package No. 1

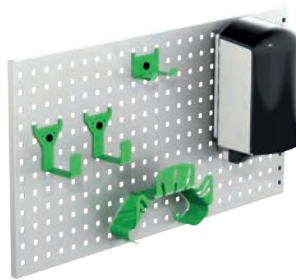


Art.No

F11001

Pegboard not included.

Accessory package No. 2

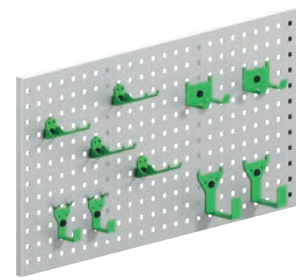


Art.No

F11002

Pegboard not included.

Accessory package No. 3



Art.No

F11004

Pegboard not included.



Up to 5 years
warranty



Crash tested



Made in Sweden

www.systemedstrom.com

**SYSTEM
EDSTRÖM**

SYSTEM EDSTRÖM BILINREDNINGAR AB
Råseborgsgatan 11
164 74 Kista
Sweden

CONTACT

Order +46 (0)10 102 95 00

Sales +46 (0)10 102 95 01

Switchboard +46 (0)8 590 920 20

info@edstrom.se