

— WE CREATE MOBILE WORKPLACES —



FORD

Courier, Connect, Custom, Transit & Ranger



SYSTEM 
EDSTRÖM

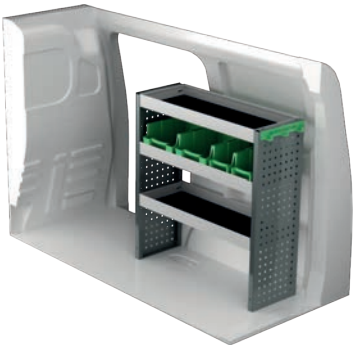
FORD TRANSIT COURIER 24-

For price information, mounting time and content in our van racking packages, scan the QR code on the first page.

On electric and hybrid vans we recommend mounting by an experienced installer. Batteries and cable harnesses for approximately 400 volt must be taken in consideration. Cost of a floor may be added.



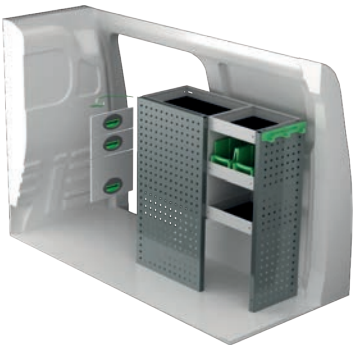
Art.No	LxDxH	Kg
F49350	1362x300x890 mm	26



Art.No	LxDxH	Kg
F49351	848x300x890 mm	18



Art.No	LxDxH	Kg
F49352	1239x300x890 mm	34



Art.No	LxDxH	Kg
F49353	804x300x890 mm	32



Art.No	LxDxH	Kg
F49354	1350x300x890 mm	47



Art.No	LxDxH	Kg
F49355	804x300x890 mm	48



Art.No	Height	Kg
F49360	250	66



Art.No	Height	Kg
F49362	470	75

FORD TRANSIT CONNECT L1 23-

For price information, mounting time and content in our van racking packages, scan the QR code on the first page.

On electric and hybrid vans we recommend mounting by an experienced installer. Batteries and cable harnesses for approximately 400 volt must be taken in consideration. Cost of a floor may be added.



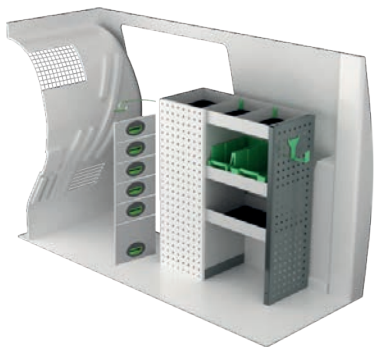
Art.No	LxDxH	Kg
F41100	1241x300x890 mm	22



Art.No	LxDxH	Kg
F41101	850x300x890 mm	24



Art.No	LxDxH	Kg
F41102	1241x300x890 mm	37



Art.No	LxDxH	Kg
F41103	725x300x890 mm	37



Art.No	LxDxH	Kg
F41108	1241x300x890 mm	35



Art.No	LxDxH	Kg
F41107	770x300x890 mm	51



Art.No	Height	Kg
F41115	250	75

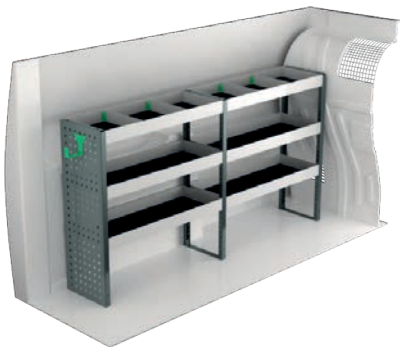


Art.No	Height	Kg
F41117	470	75

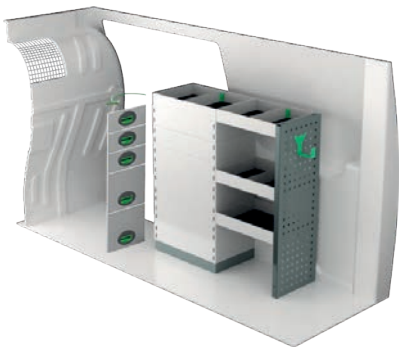
FORD TRANSIT CONNECT L2 23-

For price information, mounting time and content in our van racking packages, scan the QR code on the first page.

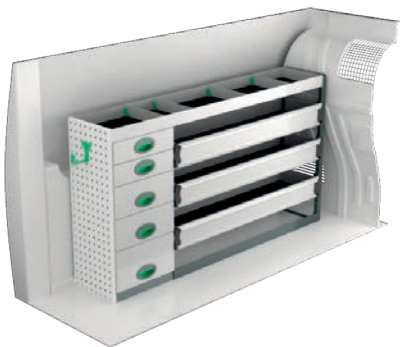
On electric and hybrid vans we recommend mounting by an experienced installer. Batteries and cable harnesses for approximately 400 volt must be taken in consideration. Cost of a floor may be added.



Art.No	LxDxH	Kg
F41130	1665x300x890 mm	26



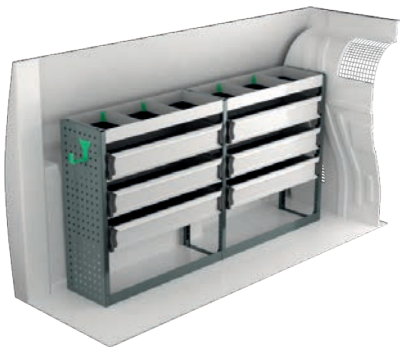
Art.No	LxDxH	Kg
F41131	895x300x890 mm	40



Art.No	LxDxH	Kg
F41132	1620x300x890 mm	57



Art.No	LxDxH	Kg
F41135	1063x300x890 mm	29



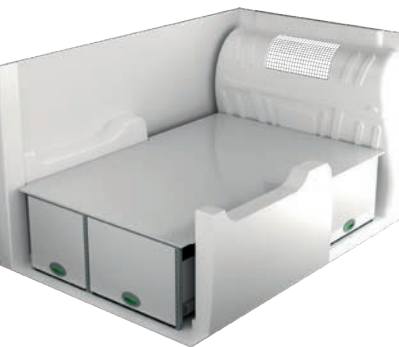
Art.No	LxDxH	Kg
F41138	1665x300x890 mm	45



Art.No	LxDxH	Kg
F41137	940x300x890 mm	64



Art.No	Height	Kg
F41143	250	99

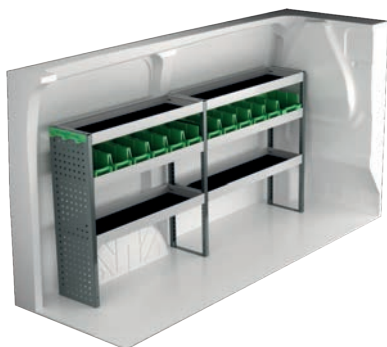


Art.No	Height	Kg
F41146	470	104

FORD TRANSIT CUSTOM L1

For price information, mounting time and content in our van racking packages, scan the QR code on the first page.

On electric and hybrid vans we recommend mounting by an experienced installer. Batteries and cable harnesses for approximately 400 volt must be taken in consideration. Cost of a floor may be added.



Art.No	LxDxH	Kg
F49300	1998x300x1000 mm	38



Art.No	LxDxH	Kg
F49301	1061x300x1000 mm	24



Art.No	LxDxH	Kg
F49302	1998x300x1000 mm	52



Art.No	LxDxH	Kg
F49303	1107x300x1000 mm	41



Art.No	LxDxH	Kg
F49304	1998x300x1140 mm	62



Art.No	LxDxH	Kg
F49305	1107x300x1000 mm	57



Art.No	Height	Kg
F49310	250	131

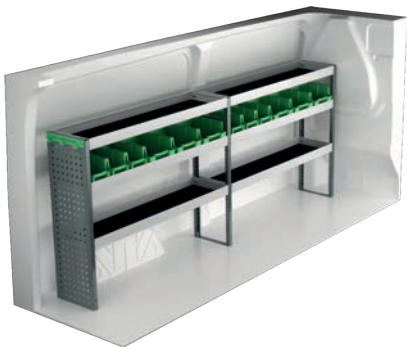


Art.No	Height	Kg
F49313	470	122

FORD TRANSIT CUSTOM L2

For price information, mounting time and content in our van racking packages, scan the QR code on the first page.

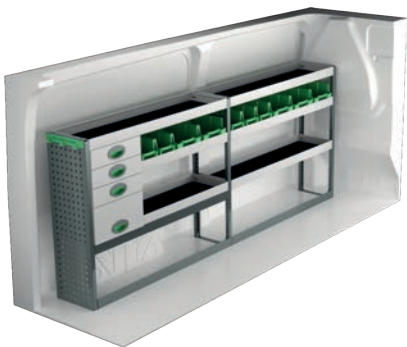
On electric and hybrid vans we recommend mounting by an experienced installer. Batteries and cable harnesses for approximately 400 volt must be taken in consideration. Cost of a floor may be added.



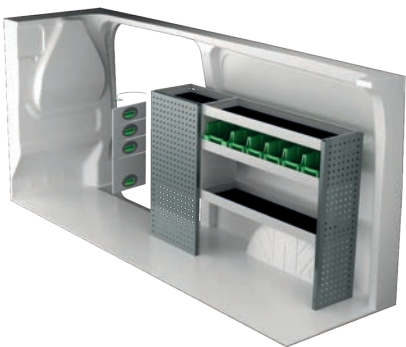
Art.No	LxDxH	Kg
F49320	2446x300x1000 mm	44



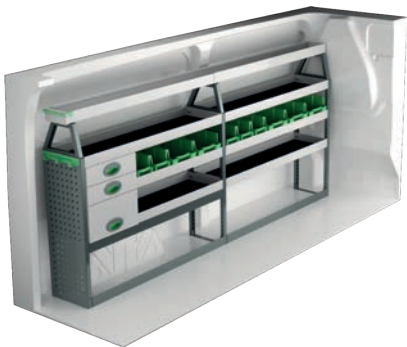
Art.No	LxDxH	Kg
F49321	1453x300x1000 mm	29



Art.No	LxDxH	Kg
F49322	2446x300x1000 mm	59



Art.No	LxDxH	Kg
F49323	1499x300x1000 mm	47



Art.No	LxDxH	Kg
F49324	2446x300x1140 mm	67



Art.No	LxDxH	Kg
F49325	1499x300x1000 mm	59



Art.No	Height	Kg
F49332	250	135

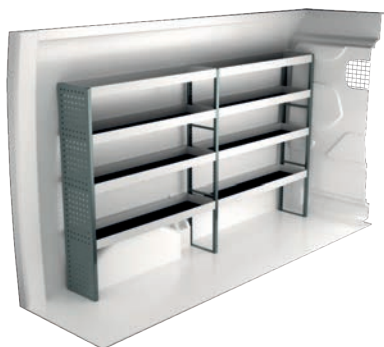


Art.No	Height	Kg
F49334	470	153

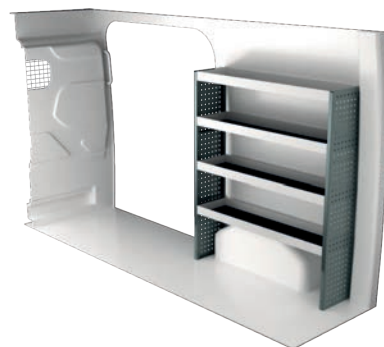
FORD TRANSIT L2H2

For price information, mounting time and content in our van racking packages, scan the QR code on the first page.

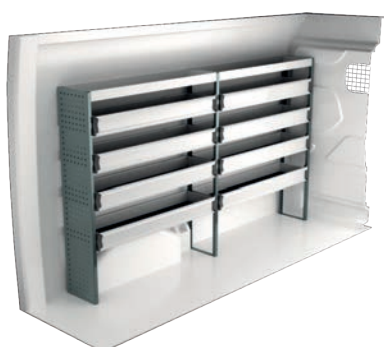
On electric and hybrid vans we recommend mounting by an experienced installer. Batteries and cable harnesses for approximately 400 volt must be taken in consideration. Cost of a floor may be added.



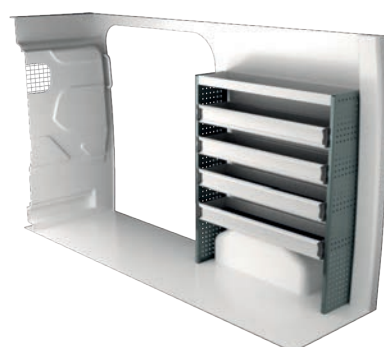
Art.No	LxDxH	Kg
F41330	2448x300x1440 mm	52



Art.No	LxDxH	Kg
F41331	1240x300x1440 mm	32



Art.No	LxDxH	Kg
F41332	2448x300x1440 mm	76



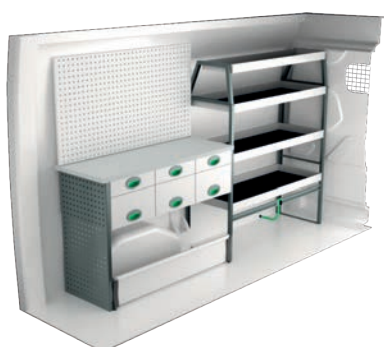
Art.No	LxDxH	Kg
F41333	1240x300x1440 mm	44



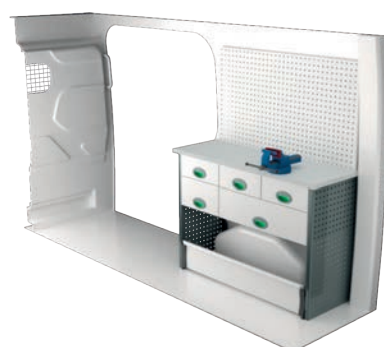
Art.No	LxDxH	Kg
F41334	2448x470x1565 mm	80



Art.No	LxDxH	Kg
F41335	1409x300x1000 mm	46



Art.No	LxDxH	Kg
F41336	2448x470x1510 mm	96



Art.No	LxDxH	Kg
F41337	1240x470x920 mm	75

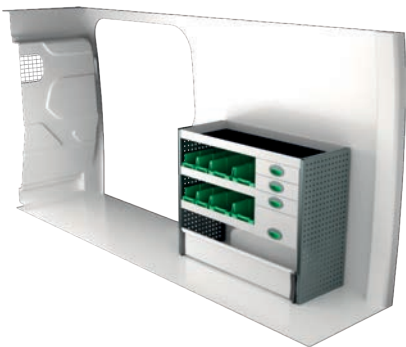
FORD TRANSIT L3H2

For price information, mounting time and content in our van racking packages, scan the QR code on the first page.

On electric and hybrid vans we recommend mounting by an experienced installer. Batteries and cable harnesses for approximately 400 volt must be taken in consideration. Cost of a floor may be added.



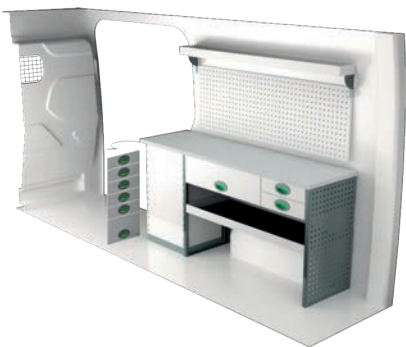
Art.No	LxDxH	Kg
F41350	2840x300x1440 mm	58



Art.No	LxDxH	Kg
F41351	1240x470x1000 mm	58



Art.No	LxDxH	Kg
F41352	2840x300x1440 mm	81



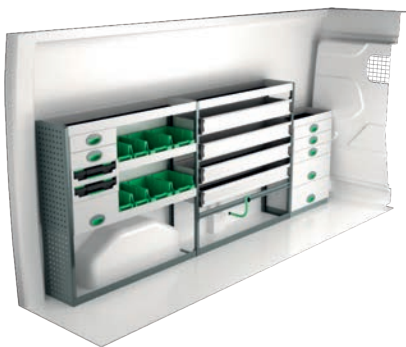
Art.No	LxDxH	Kg
F41353	1710x470x855 mm	102



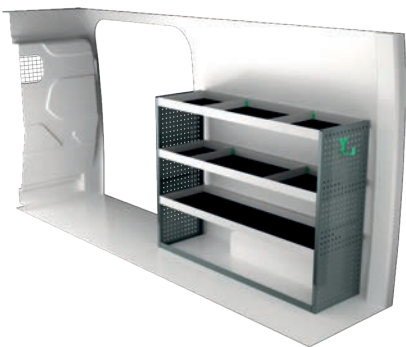
Art.No	LxDxH	Kg
F41354	2840x300x1670 mm	106



Art.No	LxDxH	Kg
F41355	1632x300x1440 mm	58



Art.No	LxDxH	Kg
F41356	3053x300x1220 mm	115



Art.No	LxDxH	Kg
F41357	1632x470x1220 mm	45

FORD RANGER

For price information, mounting time and content in our van racking packages, scan the QR code on the first page.

On electric and hybrid vans we recommend mounting by an experienced installer. Batteries and cable harnesses for approximately 400 volt must be taken in consideration. Cost of a floor may be added.



Art.No	Height	Kg
F45216	250	107



Art.No	Height	Kg
F45217	470	119



GENERALLY

The kits include what you see in the drawing as well as installation parts, rubber mats to all shelves and foam to the drawers.

System Edström Billnredningar AB is certified according to SS-EN ISO 9001:2015 to secure the administrative quality and to give us the possibility to keep a high accuracy on deliveries.

All material used in System Edström can be recycled to 100%. We are also certified according to SS-EN ISO 14001:2015.



REMEMBER

Now that you have chosen to have System Edström in your vehicle you have taken the first and most important step to make your mobile workshop safe and functional. From here on it is up to you how safe and functional your working place will be.

Remember;
You as the driver has the full responsibility if you or any one else is injured if the cargo is poorly secured. It is also your responsibility to make sure that the interior is mounted in the safest way possible whatever your choice of workshop, even if they are professionals with knowhow and long experience.

Make sure NOT to exceed the maximum payload of the vehicle.

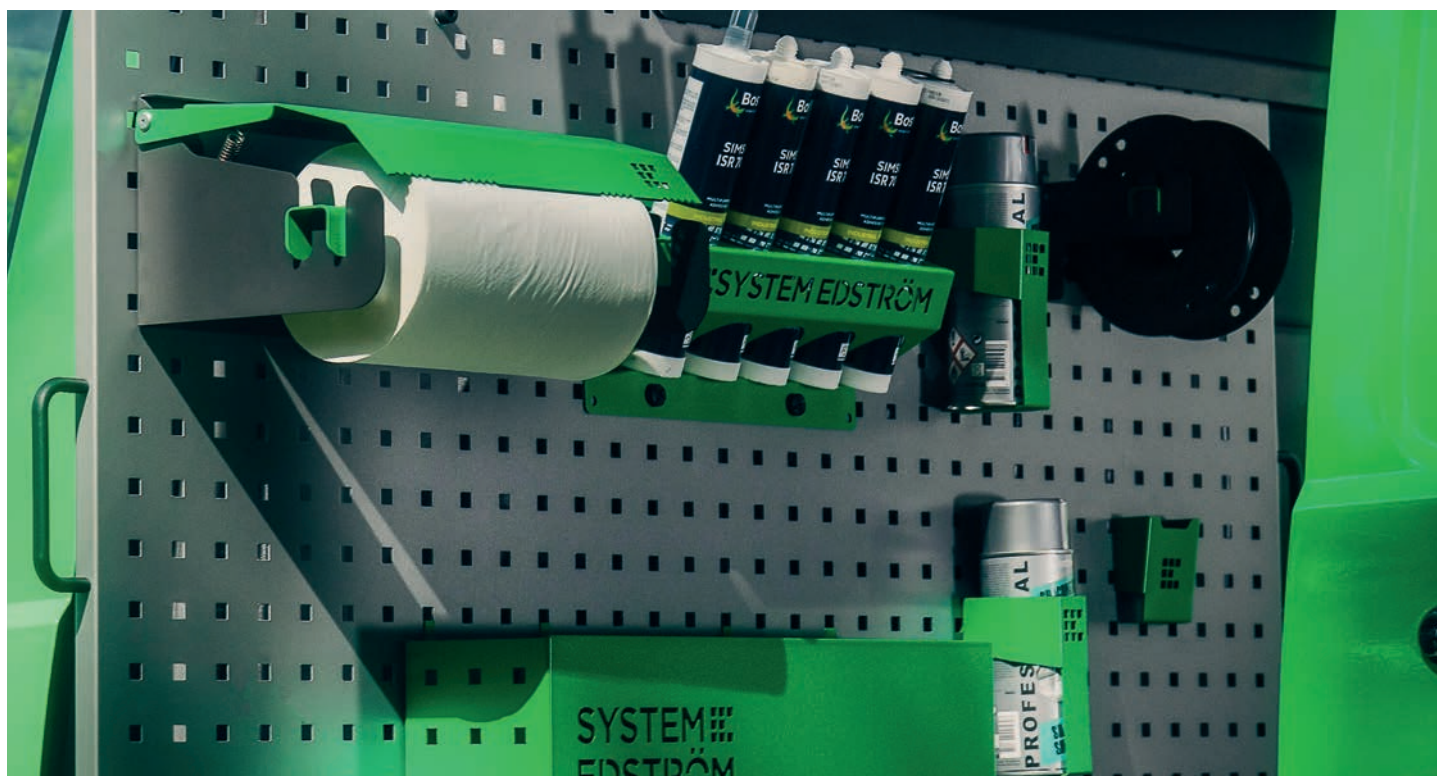


SECURITY

We crash test our racking continuously at RISE Research Institute of Sweden AB. The crash tests are carried out according to the standard INRS NS 286 which applies to van racking.

Other types of tests are also carried out at test institutes, for example shake tests that simulate several years of use on the road. We also carry out our own tensile and pressure tests, to check, for example, the strength of load securing products.

Find out more about our company and products at www.systemedstrom.com.





Vice

Depth	Width	Height	Kg	Part.No
360	135	140	10,3	5004

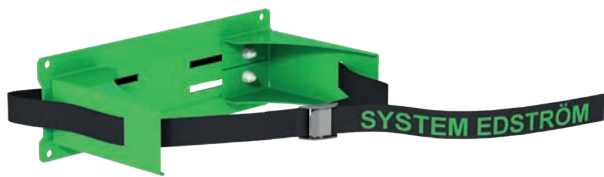
The forged vice is complete with pipe jaw and turning plate. Max opening 140 mm.



Vice Holders

Depth	Width	Height	⇒	Kg	Part.No
1110	170	195	600	9,4	5012
1110	170	80	600	8,9	5013

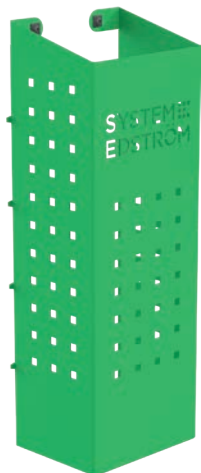
Plate measurement 170x158 mm. Cover 2950 is included.



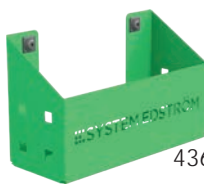
Gas bottle holder adjustable

Depth	Width	Height	Tube Ø	Kg	Part.No
150	300	97	< 300	0,9	2910

Liquefied petroleum gas P6 (bottles with 320 mm Ø can be stored after modification).



4370



4360

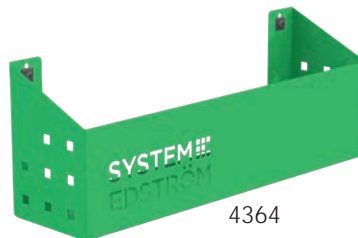


4362

Pegboard tray

Depth	Width	Height	Kg	Part.No
82	200	80	0,5	4360
82	285	102	0,8	4362
122	455	122	1,5	4364
153	179	575	3,0	4370

A number of different trays that solve (almost) all storage problems.



4364

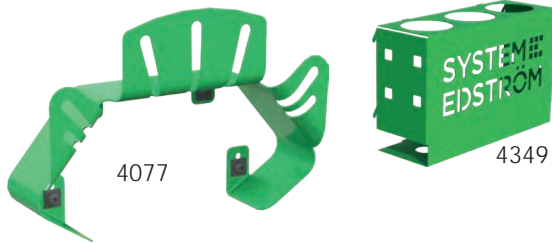


Internal ladder holder

Length	Kg	Part.No
2400	5,5	T8900

Store your ladder on the inside of the roof, pull it back to the rear door in a simple operation. The aluminum rail comes in two parts with a joining piece.



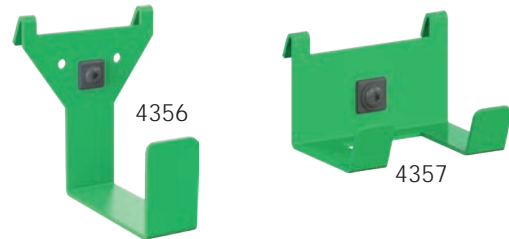


Hose/Cable rack

Depth	Width	Height	Kg	Part.No
79	267	168	0,5	4077

Tube holder

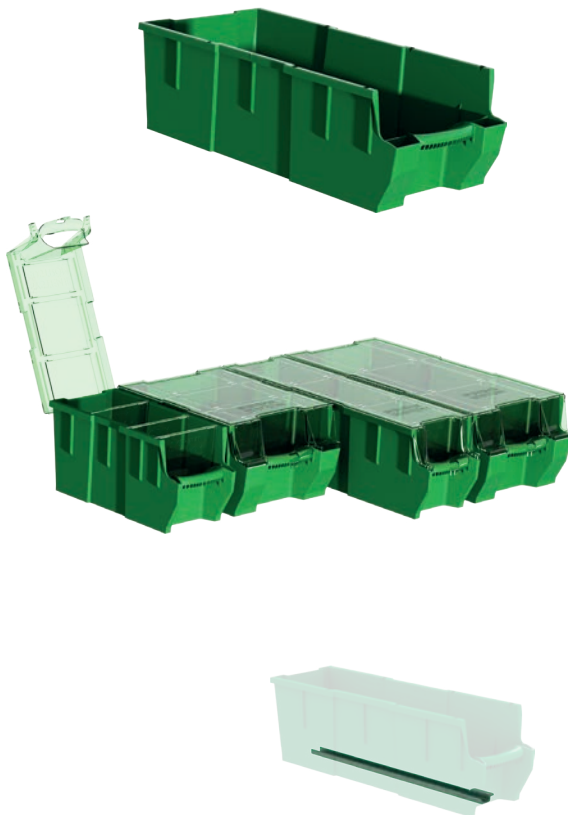
66	194	123	0,4	4349
----	-----	-----	-----	------



Universal hook

Depth	Width	Height	Kg	Part.No
85	80	100	0,2	4356
61	83	55	0,1	4357

Simplicity at its best, heavy duty hooks, to be mount on a pegboard or hang it on the edge of a shelf.



Plastic bin for shelves

Depth	Width	Height	Kg	Part.No
300	145	154	0,4	3050
300	235	154	0,5	3052
470	145	154	0,5	3055
470	235	154	0,5	3057

Transparent lid for plastic bins

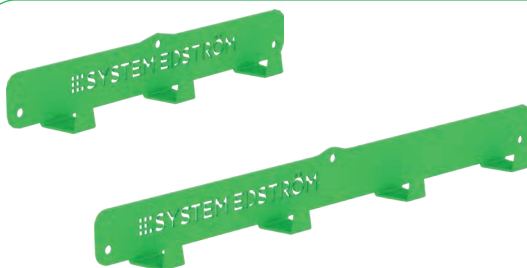
Depth	Width	Fits	Kg	Part.No
300	150	3050	0,2	3060
300	240	3052	0,2	3062
470	150	3055	0,2	3065
470	240	3057	0,4	3067

Dividers for plastic bins

Width	Height	Fits	Part.No
140	154	3050, 55	3070
230	154	3052, 57	3072

Bracket for dropfront shelves

Depth	Kg	Part.No
300	0,1	3081
470	0,2	3082



Clothes hook

Depth	Width	Height	Kg	Part.No
31	295	40	0,3	2706
31	465	40	0,5	2708

We call it a clothes hook but, needless to say, you can use it to hang up whatever you want on it.



Strap with brackets

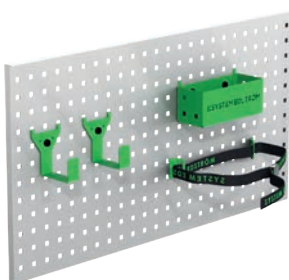
Information	Width	Part.No
1200 mm, nylon strap	25	4365
1000 mm, elastic strap	25	4366

The brackets will fit on our pegboards.





Accessory package No. 1

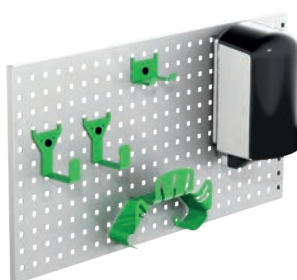


Art Nr

F11001

Pegboard not included.

Accessory package No. 2

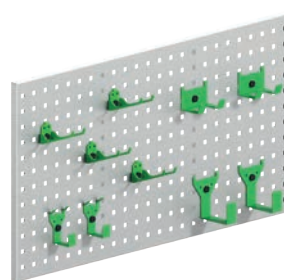


Art Nr

F11002

Pegboard not included.

Accessory package No. 3



Art Nr

F11004

Pegboard not included.

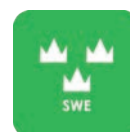
www.systemedstrom.com



WARRANTY



SAFETY



QUALITY

**SYSTEM
EDSTRÖM**

SYSTEM EDSTRÖM BILINREDNINGAR AB
Raseborgsgatan 11
164 74 Kista
Sweden

CONTACT

Order +46 (0)10 102 95 00
Sales +46 (0)10 102 95 01
Switchboard +46 (0)8 590 920 20
info@edstrom.se