

— WE CREATE MOBILE WORKPLACES —



# RENAULT

Express, Kangoo, Trafic & Master



**SYSTEM**   
**EDSTRÖM**

# RENAULT EXPRESS VAN

For price information, mounting time and content in our van racking packages, scan the QR code on the first page.

On electric and hybrid vans we recommend mounting by an experienced installer. Batteries and cable harnesses for approximately 400 volt must be taken in consideration. Cost of a floor may be added.



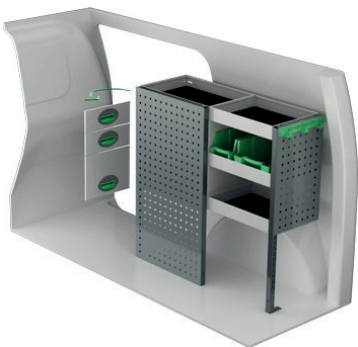
Art.No	LxDxH	Kg
F42300	1239x300x890 mm	23



Art.No	LxDxH	Kg
F42301	848x300x890 mm	18



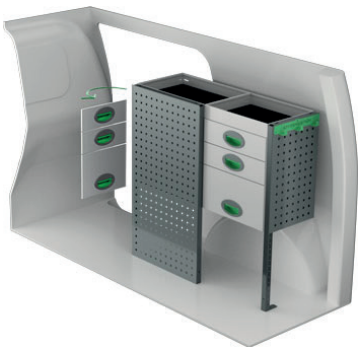
Art.No	LxDxH	Kg
F42302	1239x300x890 mm	34



Art.No	LxDxH	Kg
F42303	894x300x890 mm	32



Art.No	LxDxH	Kg
F42304	1239x300x1075 mm	44



Art.No	LxDxH	Kg
F42305	894x300x890 mm	41



Art.No	Height	Kg
F42313	250	78



Art.No	Height	Kg
F42315	470	89



# RENAULT KANGOO L1

For price information, mounting time and content in our van racking packages, scan the QR code on the first page.

On electric and hybrid vans we recommend mounting by an experienced installer. Batteries and cable harnesses for approximately 400 volt must be taken in consideration. Cost of a floor may be added.



Art.No	LxDxH	Kg
F42320	1239x300x890 mm	23



Art.No	LxDxH	Kg
F42321	848x300x890 mm	17



Art.No	LxDxH	Kg
F42322	1239x300x890 mm	32



Art.No	LxDxH	Kg
F42323	804x300x890 mm	31



Art.No	LxDxH	Kg
F42324	1239x300x890 mm	43



Art.No	LxDxH	Kg
F42325	804x300x890 mm	40



Art.No	Height	Kg
F42334	250	84

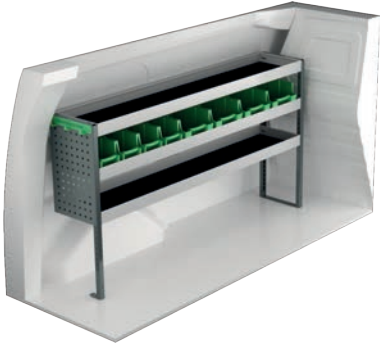


Art.No	Height	Kg
F42337	470	75

# RENAULT KANGOO L2

For price information, mounting time and content in our van racking packages, scan the QR code on the first page.

On electric and hybrid vans we recommend mounting by an experienced installer. Batteries and cable harnesses for approximately 400 volt must be taken in consideration. Cost of a floor may be added.



Art.No	LxDxH	Kg
F42340	1631x300x890 mm	28



Art.No	LxDxH	Kg
F42341	971x300x890 mm	22



Art.No	LxDxH	Kg
F42342	1631x300x890 mm	39



Art.No	LxDxH	Kg
F42343	894x300x890 mm	32



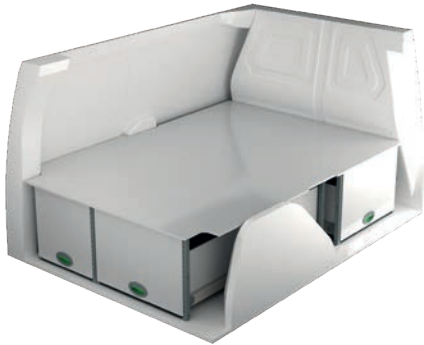
Art.No	LxDxH	Kg
F42344	1572x300x890 mm	47



Art.No	LxDxH	Kg
F42345	894x300x890 mm	41



Art.No	Height	Kg
F42351	250	90



Art.No	Height	Kg
F42353	470	102

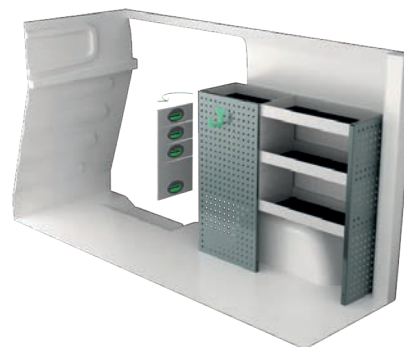
# RENAULT TRAFIC L1H1

For price information, mounting time and content in our van racking packages, scan the QR code on the first page.

On electric and hybrid vans we recommend mounting by an experienced installer. Batteries and cable harnesses for approximately 400 volt must be taken in consideration. Cost of a floor may be added.



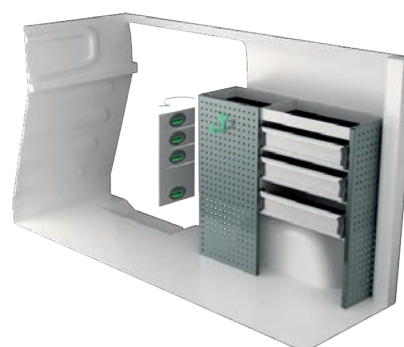
Art.No	LxDxH	Kg
F40840	1998x300x1000 mm	34



Art.No	LxDxH	Kg
F40841	1107x300x1000 mm	40



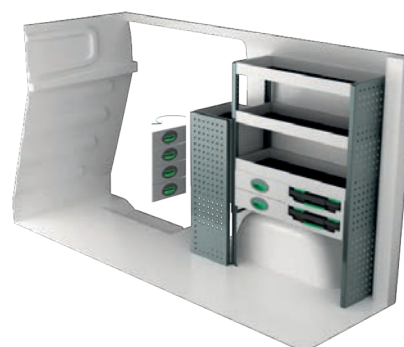
Art.No	LxDxH	Kg
F40842	1998x300x1220 mm	59



Art.No	LxDxH	Kg
F40843	1107x300x1000 mm	47



Art.No	LxDxH	Kg
F40844	1998x300x1000 mm	52



Art.No	LxDxH	Kg
F40845	1147x300x1220 mm	51



Art.No	Height	Kg
F40856	250	101



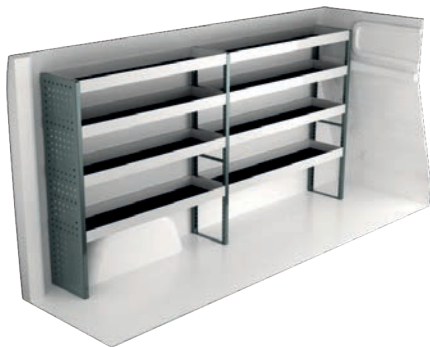
Art.No	Height	Kg
F40858	470	123



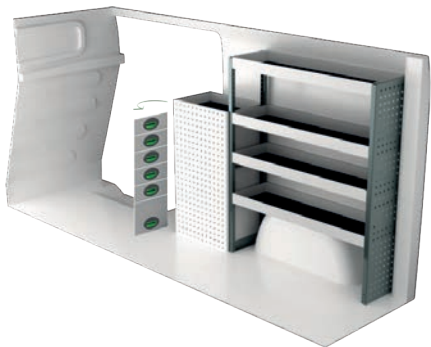
# RENAULT TRAFIC L2H1

For price information, mounting time and content in our van racking packages, scan the QR code on the first page.

On electric and hybrid vans we recommend mounting by an experienced installer. Batteries and cable harnesses for approximately 400 volt must be taken in consideration. Cost of a floor may be added.



Art.No	LxDxH	Kg
F40860	2356x300x1220 mm	48



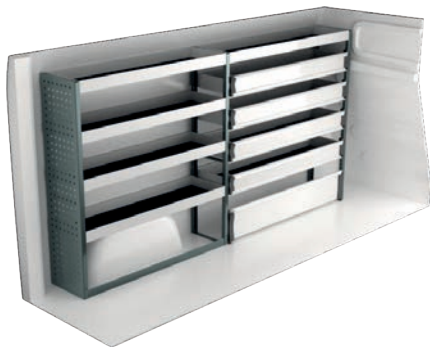
Art.No	LxDxH	Kg
F40861	1530x300x1220 mm	62



Art.No	LxDxH	Kg
F40862	2356x300x1000 mm	56



Art.No	LxDxH	Kg
F40863	1500x300x1000 mm	63



Art.No	LxDxH	Kg
F40864	2356x300x1220 mm	66



Art.No	LxDxH	Kg
F40865	1500x300x1000mm	83



Art.No	Height	Kg
F40876	250	118

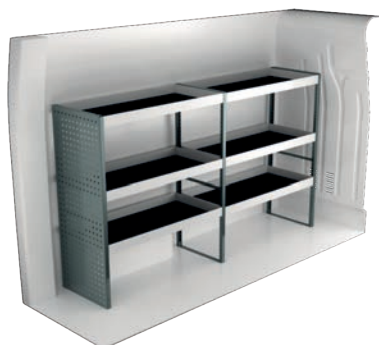


Art.No	Height	Kg
F40878	470	149

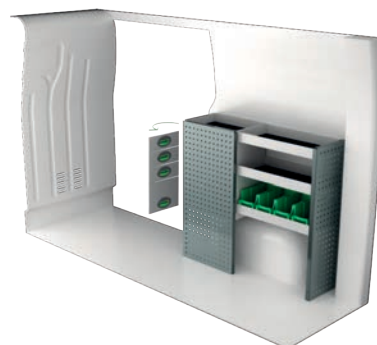
# RENAULT MASTER L1H1

For price information, mounting time and content in our van racking packages, scan the QR code on the first page.

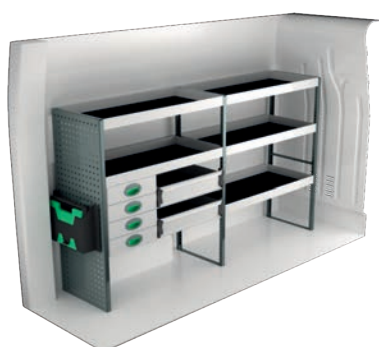
On electric and hybrid vans we recommend mounting by an experienced installer. Batteries and cable harnesses for approximately 400 volt must be taken in consideration. Cost of a floor may be added.



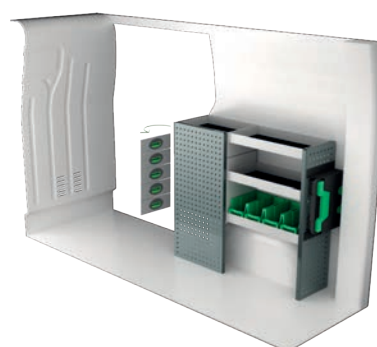
Art.No	LxDxH	Kg
F40540	2091x470x1220 mm	51



Art.No	LxDxH	Kg
F40541	1108x300x1000 mm	41



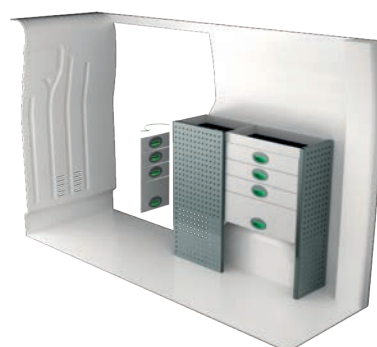
Art.No	LxDxH	Kg
F40542	2180x470x1220 mm	78



Art.No	LxDxH	Kg
F40543	1197x300x1000 mm	47



Art.No	LxDxH	Kg
F40544	2091x300x1515 mm	76



Art.No	LxDxH	Kg
F40545	1108x300x1000 mm	57



Art.No	LxDxH	Kg
F40546	2091x300x1220 mm	84

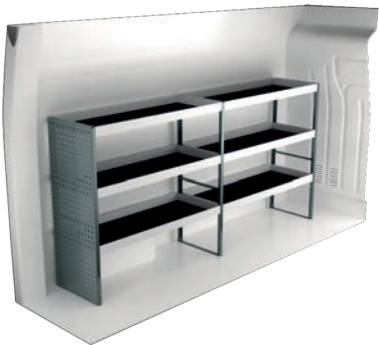


Art.No	LxDxH	Kg
F40547	1063x470x1220 mm	55

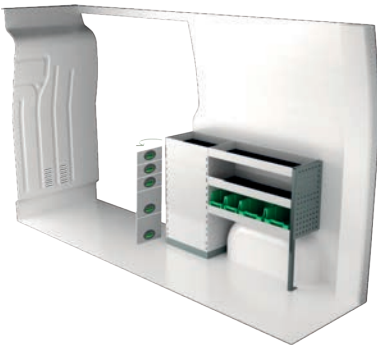
# RENAULT MASTER L2H2

For price information, mounting time and content in our van racking packages, scan the QR code on the first page.

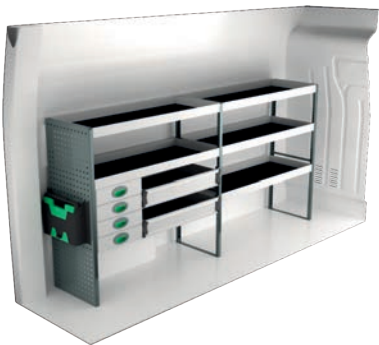
On electric and hybrid vans we recommend mounting by an experienced installer. Batteries and cable harnesses for approximately 400 volt must be taken in consideration. Cost of a floor may be added.



Art.No	LxDxH	Kg
F40500	2449x470x1220 mm	56



Art.No	LxDxH	Kg
F40501	1287x300x890 mm	44



Art.No	LxDxH	Kg
F40502	2449x470x1220 mm	86



Art.No	LxDxH	Kg
F40503	1319x300x1220 mm	69



Art.No	LxDxH	Kg
F40504	2449x300x1515 mm	93



Art.No	LxDxH	Kg
F40505	1330x470x855 mm	91



Art.No	LxDxH	Kg
F40506	2449x470x1510 mm	102



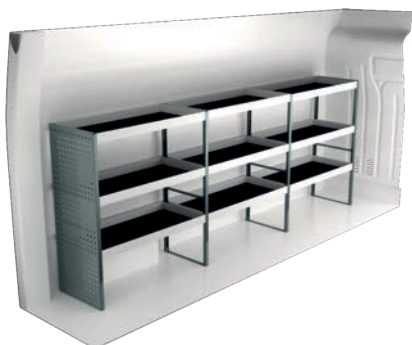
Art.No	LxDxH	Kg
F40507	1242x470x1220 mm	61



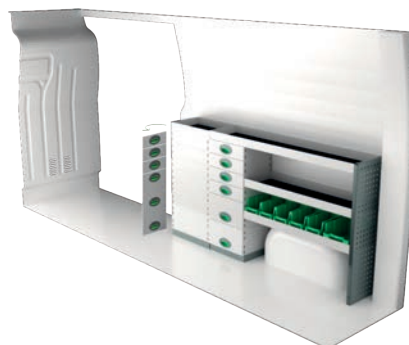
# RENAULT MASTER L3H2

For price information, mounting time and content in our van racking packages, scan the QR code on the first page.

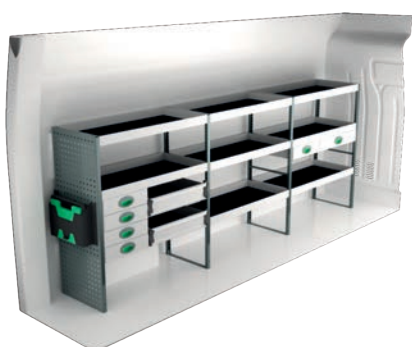
On electric and hybrid vans we recommend mounting by an experienced installer. Batteries and cable harnesses for approximately 400 volt must be taken in consideration. Cost of a floor may be added.



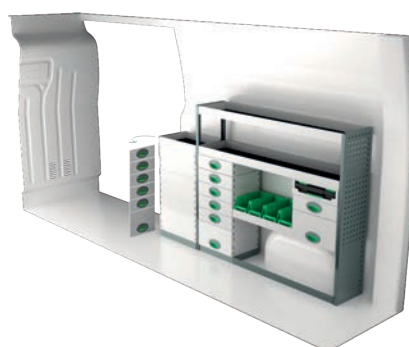
Art.No	LxDxH	Kg
F40520	3120x470x1220 mm	71



Art.No	LxDxH	Kg
F40521	1892x300x1000 mm	83



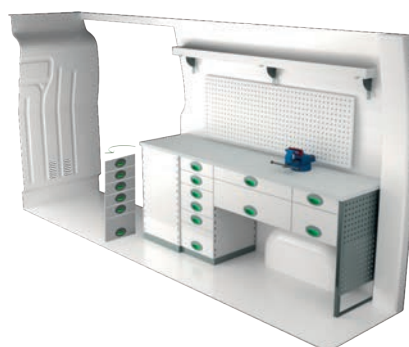
Art.No	LxDxH	Kg
F40522	3120x470x1220 mm	111



Art.No	LxDxH	Kg
F40523	1924x300x1220 mm	96



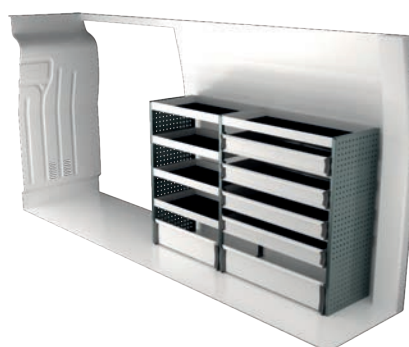
Art.No	LxDxH	Kg
F40524	3086x300x1735 mm	143



Art.No	LxDxH	Kg
F40525	2071x470x855 mm	150



Art.No	LxDxH	Kg
F40526	3054x470x1526 mm	148

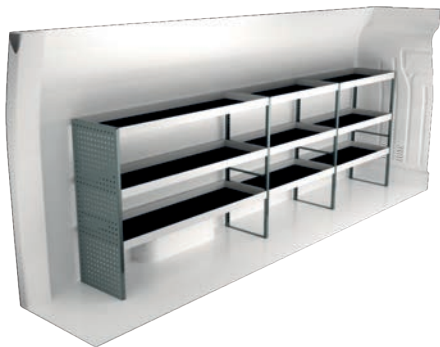


Art.No	LxDxH	Kg
F40527	1879x470x1220 mm	79

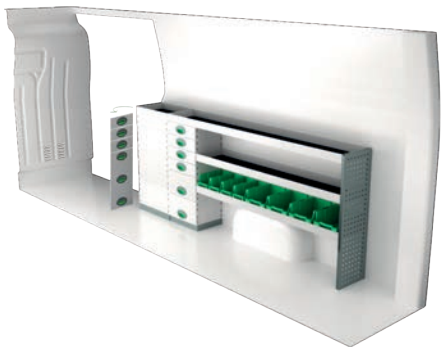
# RENAULT MASTER L4H2

For price information, mounting time and content in our van racking packages, scan the QR code on the first page.

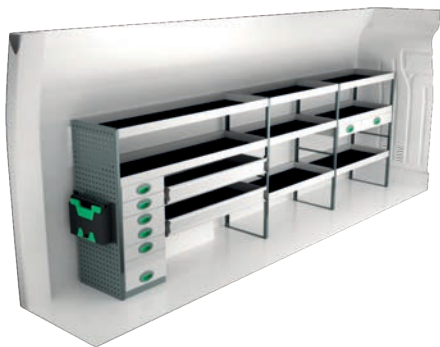
On electric and hybrid vans we recommend mounting by an experienced installer. Batteries and cable harnesses for approximately 400 volt must be taken in consideration. Cost of a floor may be added.



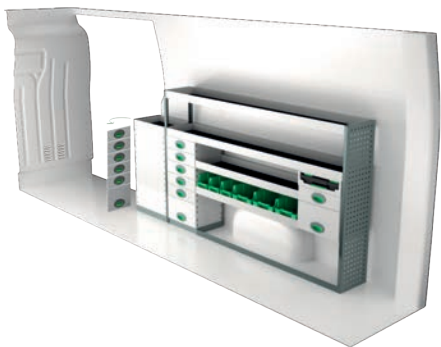
Art.No	LxDxH	Kg
F40560	3691x470x1220 mm	82



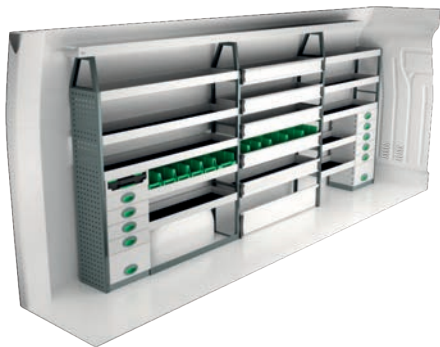
Art.No	LxDxH	Kg
F40561	2463x300x1000 mm	93



Art.No	LxDxH	Kg
F40562	3780x470x1220 mm	139



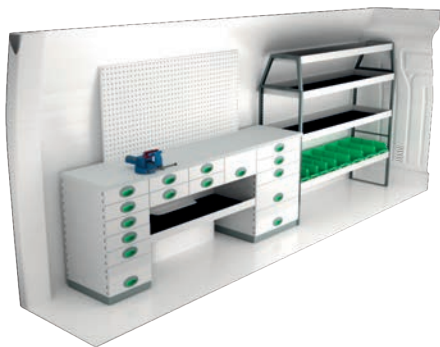
Art.No	LxDxH	Kg
F40563	2495x300x1220 mm	115



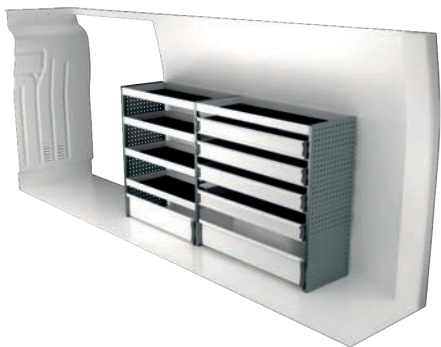
Art.No	LxDxH	Kg
F40564	3691x300x1735 mm	165



Art.No	LxDxH	Kg
F40565	2430x470x855 mm	199



Art.No	LxDxH	Kg
F40566	3805x470x1526 mm	205



Art.No	LxDxH	Kg
F40567	2271x470x1220 mm	89

# INFORMATION



## GENERALLY

The kits include what you see in the drawing as well as installation parts, rubber mats to all shelves and foam to the drawers.

System Edström Bilinredningar AB is certified according to SS-EN ISO 9001:2015 to secure the administrative quality and to give us the possibility to keep a high accuracy on deliveries.

All material used in System Edström can be recycled to 100%. We are also certified according to SS-EN ISO 14001:2015.



## REMEMBER

Now that you have chosen to have System Edström in your vehicle you have taken the first and most important step to make your mobile workshop safe and functional. From here on it is up to you how safe and functional your working place will be.

Remember;

You as the driver has the full responsibility if you or any one else is injured if the cargo is poorly secured. It is also your responsibility to make sure that the interior is mounted in the safest way possible whatever your choice of workshop, even if they are professionals with knowhow and long experience.



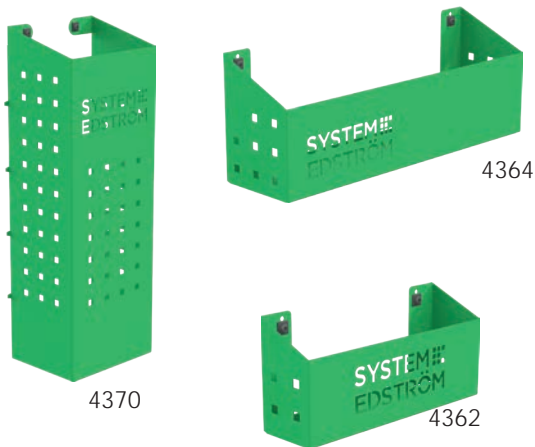
## SECURITY

We crash test our racking continuously at RISE Research Institute of Sweden AB. The crash tests are carried out according to the standard INRS NS 286 which applies to van racking.

Other types of tests are also carried out at test institutes, for example shake tests that simulate several years of use on the road. We also carry out our own tensile and pressure tests, to check, for example, the strength of load securing products.

Find out more about our company and products at [www.systemedstrom.com](http://www.systemedstrom.com).

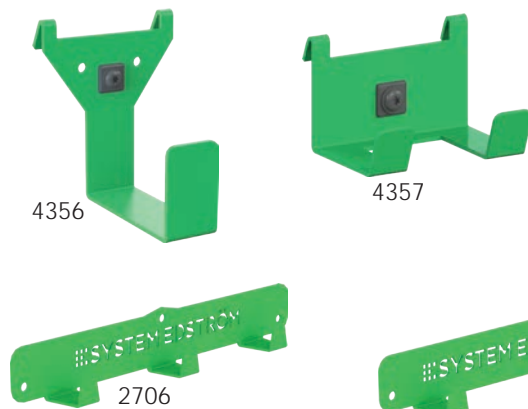
### Pegboard tray



Depth	Width	Height	Kg	Part.No
82	200	80	0,5	4360
82	285	102	0,8	4362
122	455	122	1,5	4364
153	179	575	3,0	4370

A number of different trays that solve (almost) all storage problems.

### Universal hook/ Clothes hook



Depth	Width	Height	Kg	Part.No
31	295	40	0,3	2706
31	465	40	0,5	2708
85	80	100	0,2	4356
61	83	55	0,1	4357

### Hose/Cable rack



Depth	Width	Height	Kg	Part.No
79	267	168	0,5	4077

### Tube holder

Depth	Width	Height	Kg	Part.No
66	194	123	0,4	4349

### Internal ladder holder



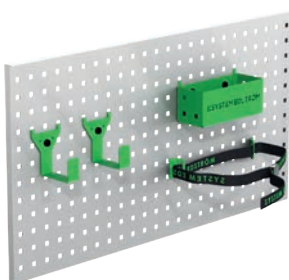
Length	Kg	Part.No
2400	5,5	T8900

Store your ladder on the inside of the roof, pull it back to the rear door in a simple operation. The aluminum rail comes in two parts with a joining piece.





#### Accessory package No. 1

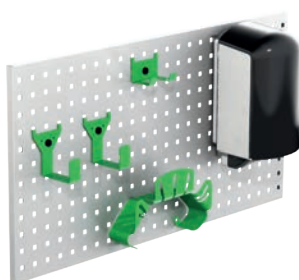


Art Nr

F11001

*Pegboard not included.*

#### Accessory package No. 2

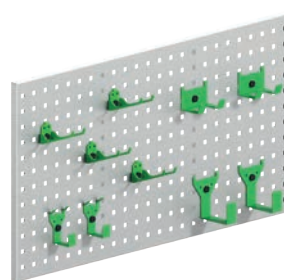


Art Nr

F11002

*Pegboard not included.*

#### Accessory package No. 3



Art Nr

F11004

*Pegboard not included.*

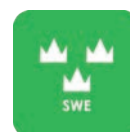
[www.systemedstrom.com](http://www.systemedstrom.com)



WARRANTY



SAFETY



QUALITY

**SYSTEM  
EDSTRÖM**

SYSTEM EDSTRÖM BILINREDNINGAR AB  
Råseborgsgatan 11  
164 74 Kista  
Sweden

#### CONTACT

Order +46 (0)10 102 95 00  
Sales +46 (0)10 102 95 01  
Switchboard +46 (0)8 590 920 20  
[info@edstrom.se](mailto:info@edstrom.se)